



### Eclipse LDX Thermal Imager

Article No.: 90177BD377



Eclipse is the first low-cost, Ultra-small form factor, handheld thermal imager designed to help give "sight" to each firefighter inside a blaze. Developed to provide firefighters navigational & search/rescue assistance, Eclipse gives departments the opportunity to equip more firefighters with thermal imaging technology.

Getting a thermal imager into the hands of every firefighter was just a vision a few years ago. Today, Bullard makes that vision a reality with the introduction of Eclipse.



#### OUTSTANDING PERFORMANCE

The Eclipse LDX uses infrared engine technology running at an ultra-fast 60 Hertz image update rate and incorporates **Image Contrast Enhancement (ICE™)** technology for the ultimate image performance in fire conditions.

- Housed in a compact
- Sleek design
- Eclipse LDX is available in 240 X 180 and 320 x 240 resolutions to accommodate your budget.

#### BRIGHTEST LCD DISPLAY

The new display on the Eclipse LDX greatly increases brightness and improves contrast, enabling firefighters to see more clearly in thick smoke and direct sunlight.

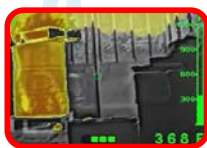
#### ADVANCE FEATURES

Available as optional features on the Eclipse LDX are Bullard's patented **Electronic Thermal Throttle®** that enables firefighters to pinpoint hot spots with the touch of a button and Super Red Hot colorization, highlighting high-heat scenes in brilliant shades of yellow, orange, and red.

Customizable temperature measurement in both numeric and relative heat indicator formats and an integrated DVR are also optional features.



Fast



Present



Electronic Thermal Throttle® (optional)

#### ICE™ Image Processing

Equipped with ICE, the T4X provides superior infrared imagery utilizing state-of-the-art image processing techniques. ICE technology sharpens the distinction between objects and backgrounds and optimizes the image for greater clarity. With ICE, firefighters can detect beyond the fire.



Doc. Control:	Rev.:	Date:
	3.2	April 10, 2016

This Article Data Sheet (ADS) is designed and produced by FLOWTRONIX (FT) covered under the intellectual property law. Any reproduction in whole or in part is strictly prohibited without written approval. FT FR 6050-3



# Eclipse Thermal Imager

Article No.: 90177BD377

## TECHNICAL SPECIFICATION

### Physical

• Configuration	Small Handheld Thermal Imager
• Weight (w/ battery)	895g
• Weight (w/o battery)	800g
• Dimensions	H: 109mm, L: 198mm, W: 132mm
• Housing Material	Ultem® Thermoplastic
• Housing Colors	Metallic Blue, Blue, Yellow, Lime-Yellow, Red, Orange, White, Black

### Electrical

• Power Source	NiMH Rechargeable Battery
• Battery Capacity	1650 mAh
• Battery Cycles	> 800 @ 70% Capacity
• Start-up Time	< 4 Seconds
• Operating Time	3 Hours
• Recharge Time	2 Hours

### Infrared Detector

• Detector Type	Microbolometer
• Detector Sensing Material	Vanadium Oxide
• Detector Resolution	240 x 180 or 320 x 240
• Spectral Response	7-14 Microns
• Update Rate	60 Hz
• NETD	< 50 mK
• Dynamic Range	600
• Pixel Pitch	17 µm
• Video Polarity	White-Hot

### Lens

• Material	Germanium
• Field of View	30° V x 40° H
• Focus	Fixed 1 meter to infinity
• Speed	f/1.4

### Display

• Type	Digital, Liquid Crystal Display (LCD)
• Size	3.5" Diagonal TFT Active Matrix
• Pixel Format	RGB
• Brightness	500 cd/m2 (minimum)
• Contrast Ratio	350:1 (typical)
• Viewing Angle (Typical)	Top = 60°, Bottom = 40°, Left / Right = 60°



### Features and Accessories (optionally installed in unit)

• Temperature Measurement	Numeric and/or Bar Style
• Super Red Hot	Color above 260
• Electronic Thermal Throttle	Manually activated Blue Hot Spot Colorization
• SceneCatcher Digital Video Recorder	
– Video Format	NTSC
– Video FileType	AVI
– Video Image Size	720 x 480
– Video Record Time	5 hours
– Connection	USB

### Performance

• 260 Heat Resistance	5 minutes with no damage to electronics
• 150 Heat Resistance	15 minutes of continued operation with no damage
• -29 Cold Resistance	Continued operation
• Water Resistance	IP67
• Impact Resistance	2 m drops on concrete with no damage

### Accessories

Eclipse Retract Strap



Eclipse Battery Charger Base



Eclipse PowerUp



Eclipse Powerhouse Charger



Doc. Control:	Rev.: 3.2	Date: April 10, 2016
---------------	-----------	----------------------

This Article Data Sheet (ADS) is designed and produced by FLOWTRONIX (FT) covered under the intellectual property law. Any reproduction in whole or in part is strictly prohibited without written approval. FT FR 6050-3