

**AirInA™**  
workwears

## BODY WARMER JACKET

Article No.: 4504AI175

Airina™ is an innovative international workwear design brand, producing a wide-ranging collection of coveralls, work sets and accessories. Leader in pioneering new styles, fabrics, manufacturing methods and quality control to guarantee an outstanding product.

Over this period, protection with style has reached soaring heights as a concept thus furthering the axiom of “Strengthening the Sense of Safety” amongst the users. Airina™ aim is to develop a sense of well-being and comfort amongst users working in different environments.



### COMPOSITION

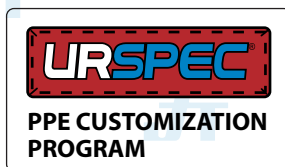
A functional windproof and breathable Body Warmer Jacket, perfect for working outdoors.

- Blend: 65% Polyester & 35% Cotton.
- Outer Shell: Polyester Cotton / 8.5 Oz. Twill
- Inner Shell: Blended fabric, stitched with Persona™ retainer lining (a wind barrier feature that keep you warm in the coldest of conditions). Quilted at a distance of 2 sq. inches.

### STYLE & DESIGN

- Garment is fully double stitched.
- Two front lower pocket with flap
- One inside pocket.
- Elasticated waistband.
- Snap button & flap closure.
- With mobile pocket & pencil slot on left chest

### KEY FEATURES



“Strengthening the Sense of Safety”

Doc. Control:	Rev.:	Date:
	3.2	April 6, 2016

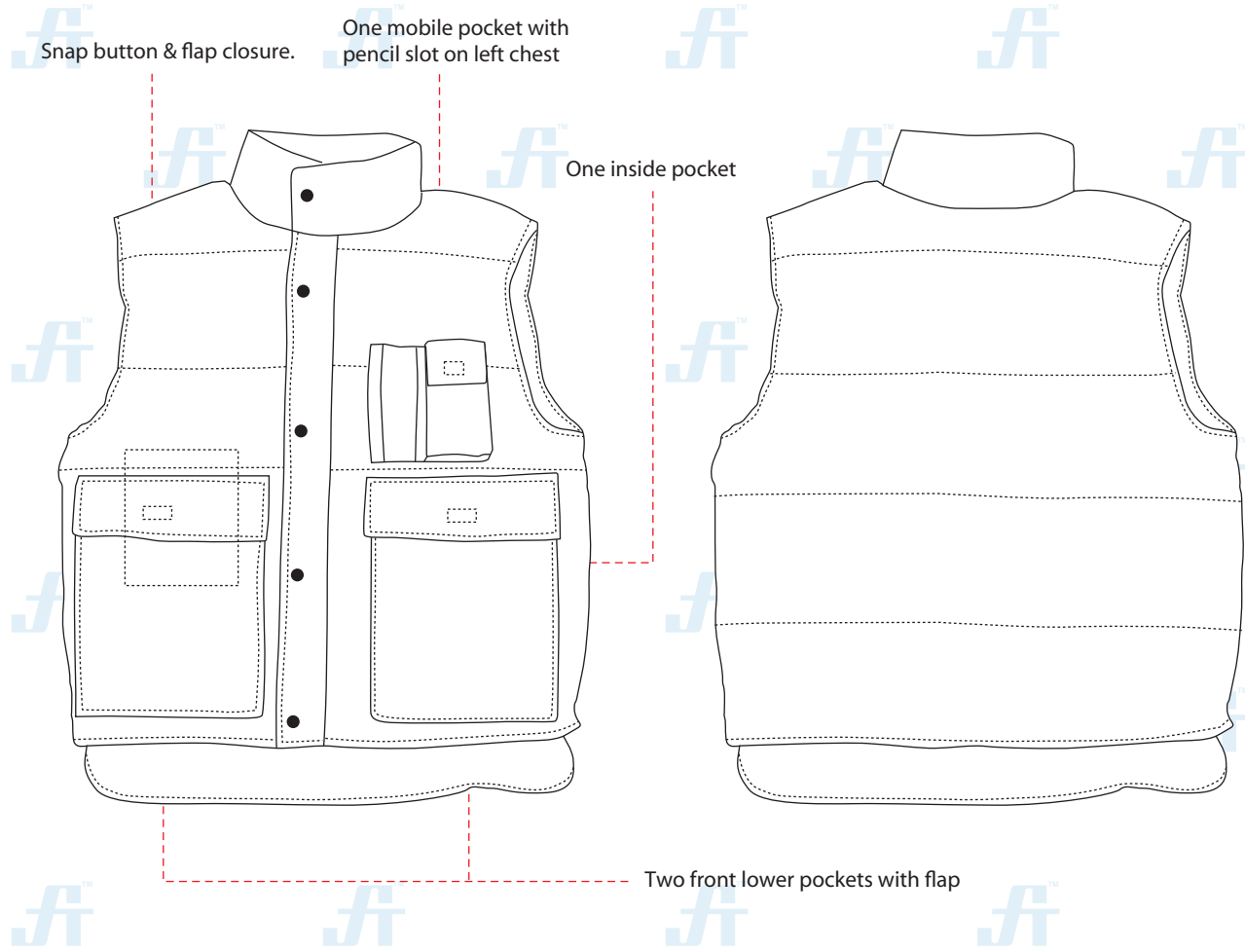
This Article Data Sheet (ADS) is designed and produced by FLOWTRONIX (FT) covered under the intellectual property law. Any reproduction in whole or in part is strictly prohibited without written approval. FT IW 7007-3.2



**AirInA**<sup>TM</sup>  
workwears

**BODY WARMER JACKET**  
Article No.: 4501AI175

**STYLE & DESIGN SPECIFICATIONS**



**COLOURS**



Black



Dark Navy Blue

**SIZE CHART**

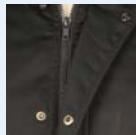
S	M	L	XL	2XL	3XL	4XL
36-38	40-42	44-46	48-50	52-54	56-58	60-62

**PPE CUSTOMIZATION PROGRAM**

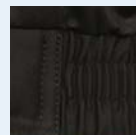


- Style and colour as per Client's requirements can be produced.
- Computerized embroidered company logo, name badges & job designation.
- EN 471 High-Viz Reflective Tape

**COMPONENTS**



Storm flap closure with zipper & snap button



Elastic waist & on back

**PACKING**

Each piece in polythene cover and 20 pcs. in seaworthy carton

**"Strengthening the Sense of Safety"**

Doc. Control:	Rev.:	Date:
	3.2	April 6, 2016

This Article Data Sheet (ADS) is designed and produced by FLOWTRONIX (FT) covered under the intellectual property law. Any reproduction in whole or in part is strictly prohibited without written approval. FT IW 7007-3.2

