



SA521 MATERNITY SCRUB TOPS

Article No. 38213SA521

Stylish maternity scrub top with Y-neck design, snap front, and shirring along the midriff, this look provides both modern flair and effortless accommodation for that ever-growing belly. Available in variety of colors and customization options.



COMPOSITION

Fabric: 55% Cotton, 45% Polyester Poplin
Weight: 160 GSM

STYLE & DESIGN

- Y-neck styling with 4 prong type snap button closure up to midriff
- Short sleeve length
- Two sides patch pocket with rounded opening
- Mobile pocket with angled opening
- Back princess seam/stitched for contoured fit
- Lightweight & durable construction

COLORS



SIZES

XS S M L XL 2XL

Perfect Match with Maternity Scrub Pants

Article Number
39213SA526

Sizes
XS to 2XL



Doc. Control:	Rev.:	Date:
	3.2	April 7, 2016

This Article Data Sheet (ADS) is designed and produced by FLOWTRONIX (FT) covered under the intellectual property law. Any reproduction in whole or in part is strictly prohibited without written approval. FT IW 7114-3.2

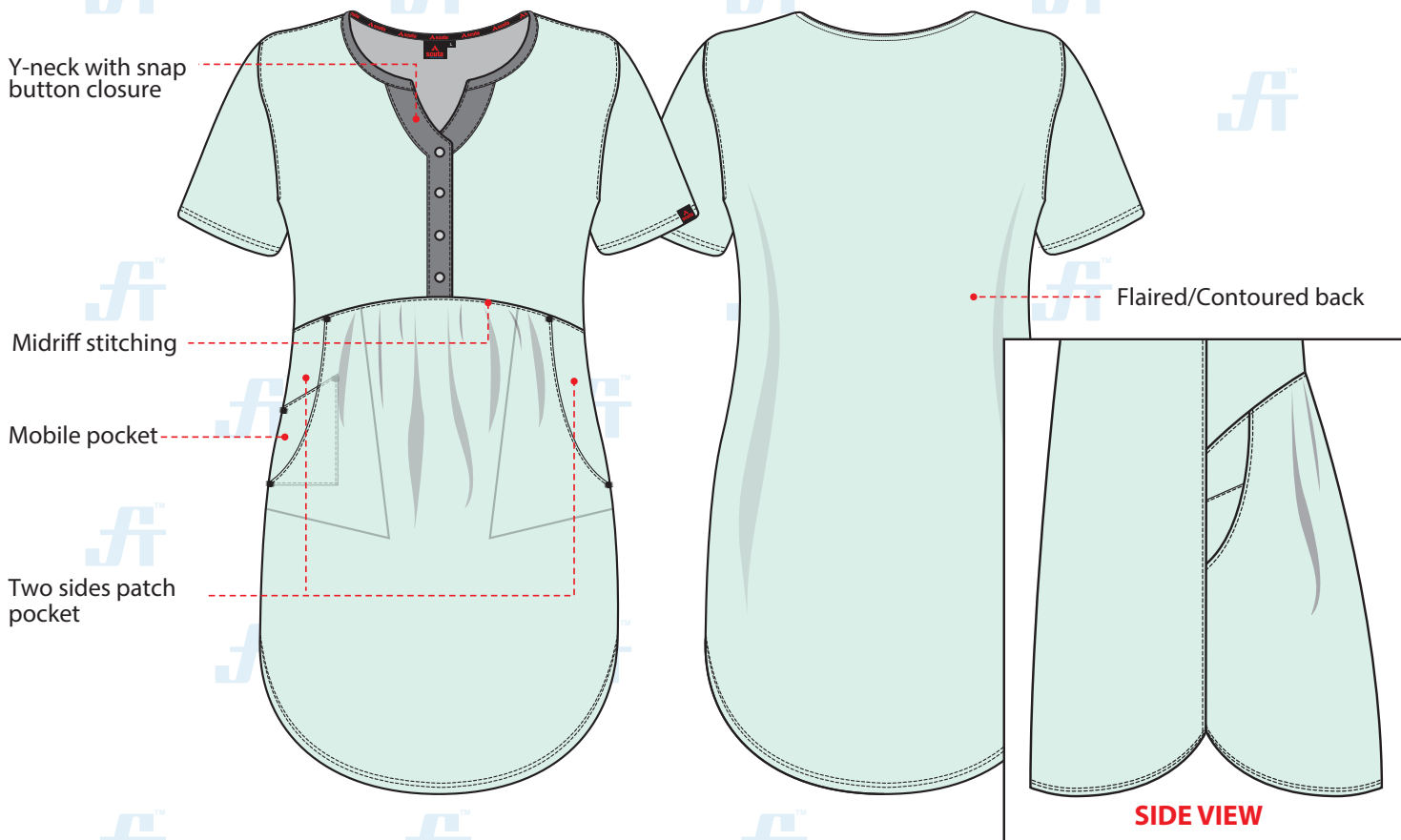




SA521 MATERNITY SCRUB TOPS

Article No. 38213SA521

STYLE & DESIGN SPECIFICATIONS



COLORS



SIZE CHART

XS S M L XL 2XL

PPE CUSTOMIZATION PROGRAM



- Style and colour as per Client's requirements can be produced
- Name badge/ Designation/Logo placement

PACKING

Each piece in polythene cover and 20 pcs. in seaworthy carton

Doc. Control:	Rev.:	Date:
	3.2	April 7, 2016

This Article Data Sheet (ADS) is designed and produced by FLOWTRONIX (FT) covered under the intellectual property law. Any reproduction in whole or in part is strictly prohibited without written approval. FT IW 7114-3.2

