



## CHEF COAT (HS)

Article No.1904SA477

Our Chef Coats are built to last and stand up to the most demanding culinary environments. These chef coats are designed to wash, wear & perform, while offering the same style, fit and functionality you expect from Chef works.

Constructed with 7.0 oz., 65/35 poly/cotton twill fabric. This is a short sleeve, mandarin collar, double-breasted chef coat with and pearlized buttons.

The Chef Coat has a left chest patch and thermometer pockets. Available in black & white.



### COMPOSITION

Fabric: 65% Polyester, 35% Cotton Twill  
Weight: 7.0 Oz

### STYLE & DESIGN

- Double-breasted front
- 10 Pearlized button closure
- Thermometer pocket on left sleeves
- Left chest patch pocket
- Short sleeves
- Mandarin collar
- Stain-resistant finish
- Lightweight
- Durable construction
- Center back length: 29.25 inches

### COLORS



White



Black

### SIZES

XS to 5XL

**URSPEC**

PPE CUSTOMIZATION PROGRAM

Doc. Control:	Rev.:	Date:
	3.2	April 7, 2016

This Article Data Sheet (ADS) is designed and produced by FLOWTRONIX (FT) covered under the intellectual property law. Any reproduction in whole or in part is strictly prohibited without written approval. FT IW 7090-3.2



A PRODUCT OF

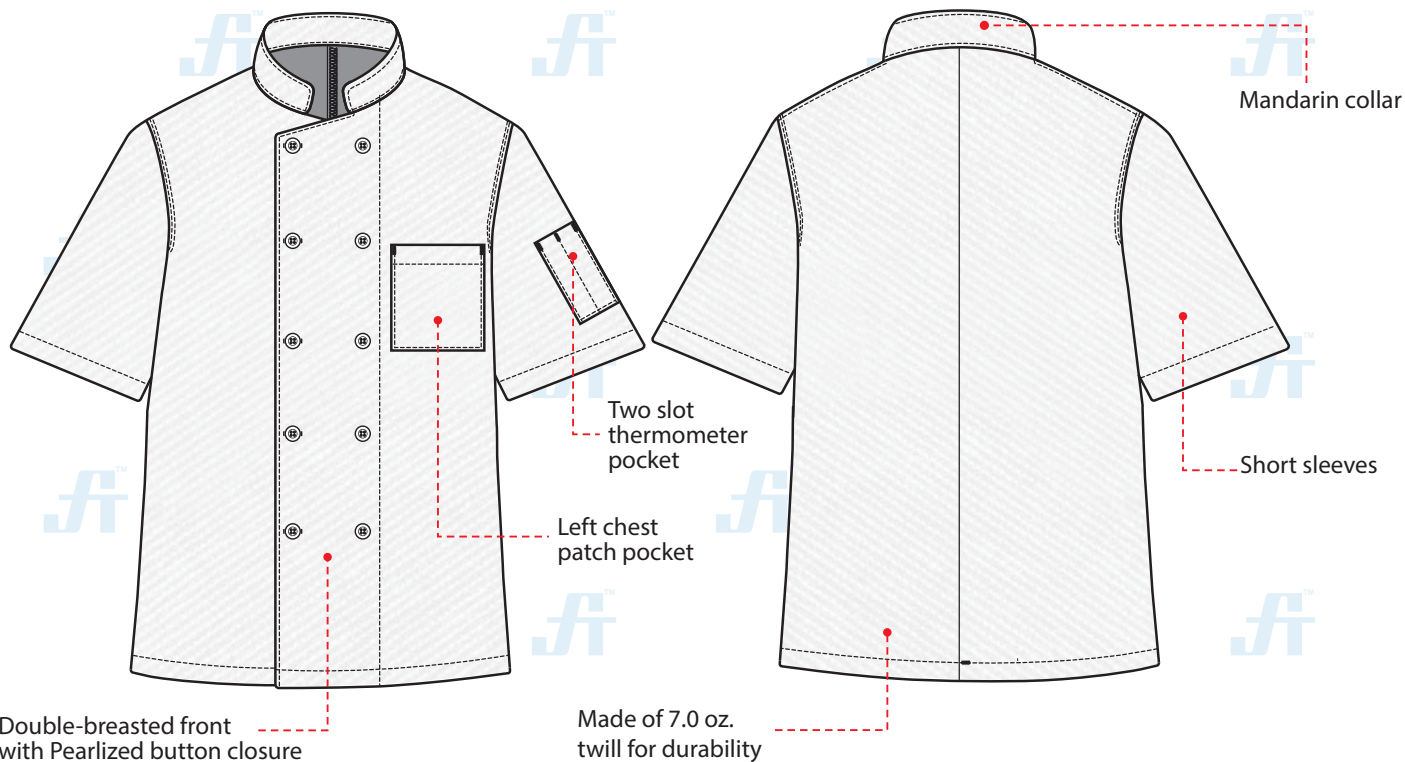




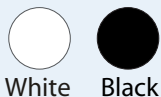
# CHEF COAT (HS)

Article No.: 1904SA477

## STYLE & DESIGN SPECIFICATIONS



### COLORS



### SIZE CHART

XS S M L XL 2XL 3XL 4XL 5XL

### PPE CUSTOMIZATION PROGRAM



- Style and colour as per Client's requirements can be produced
- Name badge/ Designation/Logo placement

### PACKING

Each piece in polythene cover and 20 pcs. in seaworthy carton

Doc. Control:	Rev.: 3.2	Date: April 7, 2016
---------------	-----------	---------------------

This Article Data Sheet (ADS) is designed and produced by FLOWTRONIX (FT) covered under the intellectual property law. Any reproduction in whole or in part is strictly prohibited without written approval. FT IW 7090-3.2

