



## WORK LABCOAT

Article No.: 0904SP01

Supremo® Workwears is made of 65% Polyester & 35% Cotton. Lightweight garments that is breathable, comfortable and soft garment providing the best comfort throughout working hours. Three (3) pockets design, very well stitched and bar tacked on all stress points with air ventilation on back. Available in most basic colours and can be customized as per client requirements.



### DESCRIPTION

Fabric: 65% Polyester, 35% Cotton  
Weight: 180 gsm/sq. mtr.

- Fully Mercerized
- Fast Colour
- No Color Bleeding
- Cool & Comfortable

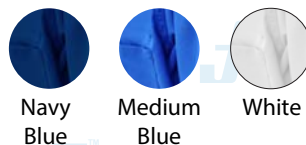
### STYLE & DESIGN

- Knee long & with long sleeves
- Three front pockets
- Stud buttons made of stainless steel
- Pencil slot on left sleeve
- Mesh fabric for air ventilation
  - For Men : Back Ventilation
  - For Women : Two Sides Ventilation



PPE CUSTOMIZATION PROGRAM

### COLORS



Navy Blue    Medium Blue    White

### SIZES

Small    Medium    Large    XLarge    2X Large    3X Large

Doc. Control:	Rev.:	Date:
	3.2	April 6, 2016

This Article Data Sheet (ADS) is designed and produced by FLOWTRONIX (FT) covered under the intellectual property law. Any reproduction in whole or in part is strictly prohibited without written approval. FT IW 7021-3.2



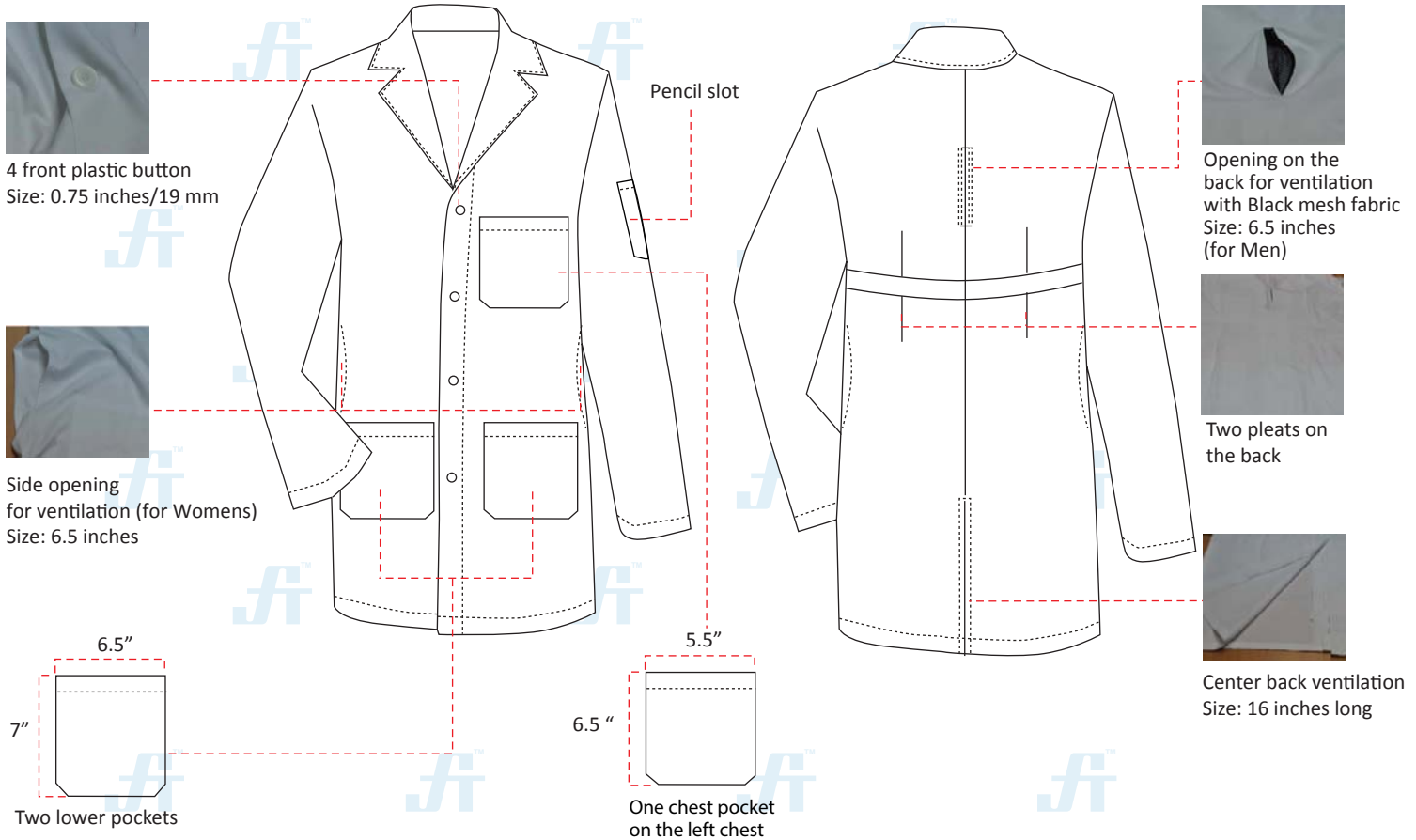
A PRODUCT OF  
  
 PROTECTIVE LINE



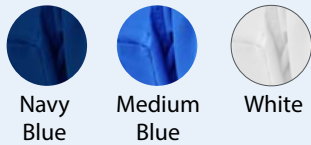
## WORK LABCOAT

Article No.: 0904SP01

### STYLE & DESIGN SPECIFICATIONS



#### COLOURS

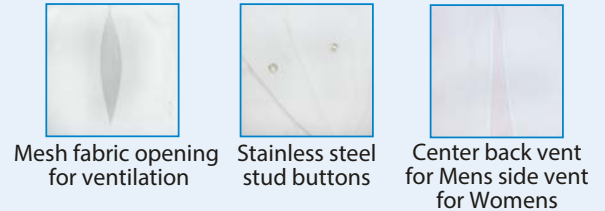


#### PPE CUSTOMIZATION PROGRAM



- Style and colour as per Client's requirements can be produced.
- Computerized embroidered company logo, name badges & job designation.
- EN 471 High-Viz Reflective Tape

#### COMPONENTS



#### SIZE CHART

	S	M	L	XL	2XL	3XL
Collar	14	14.5	15	15.5	16	16.5
Sleeve length	22	22.5	24	24	24.5	25
Shoulder	17	17	19	19	19.5	20
Chest	21	21.5	23	24	26	27
Length	19	19	19.5	20.5	21.5	22

\*Size in inches

#### PACKING

Each piece in polythene cover and 20 pcs. in seaworthy carton

Doc. Control:	Rev.: 3.2	Date: April 6, 2016
---------------	-----------	---------------------

This Article Data Sheet (ADS) is designed and produced by FLOWTRONIX (FT) covered under the intellectual property law. Any reproduction in whole or in part is strictly prohibited without written approval. FT IW 7021-3.2

