



WORK LABCOAT

Article No.: 0902FS01

FT-Falcon Super® is made of durable and comfortable 100% Super Fine Cotton, that are best for on and off the job. Absorbent and soft garment providing the best comfort throughout working hours. Bi-swing back designed for easy movement. Eight (8) pockets design, very well stitched and bar tacked on all stress points. Available in most basic colours and can be customized as per client requirements.



DESCRIPTION

Fabric: 100% Super Fine Cotton
Weight: 200 gsm/sq. mtr.

- Fully Mercerized
- Heavy Duty Garment
- Fast Colour
- Cool & Comfortable

100%
SUPER FINE
COTTON

STYLE & DESIGN

- Pre-cure durable press
- Lined notched lapel collar Left breast pocket and • two lower pockets
- Button front closures
- Pencil slot on left sleeve
- Mesh fabric opening for ventilation
- Center back vent openings
- All stress points are bar tacked

URSPEC

PPE CUSTOMIZATION
PROGRAM

COLORS



Navy
Blue



Medium
Blue



White

SIZES

Small Medium Large Extra Large 2XLarge 3XLarge 4XLarge

Doc. Control:	Rev.:	Date:
	3.2	April 6, 2016

This Article Data Sheet (ADS) is designed and produced by FLOWTRONIX (FT) covered under the intellectual property law. Any reproduction in whole or in part is strictly prohibited without written approval. FT IW 7013-3.2



A PRODUCT OF





WORK LABCOAT

Article No.: 0902FT63

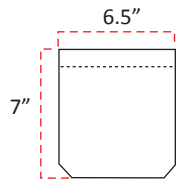
STYLE & DESIGN SPECIFICATIONS



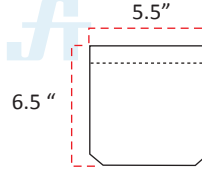
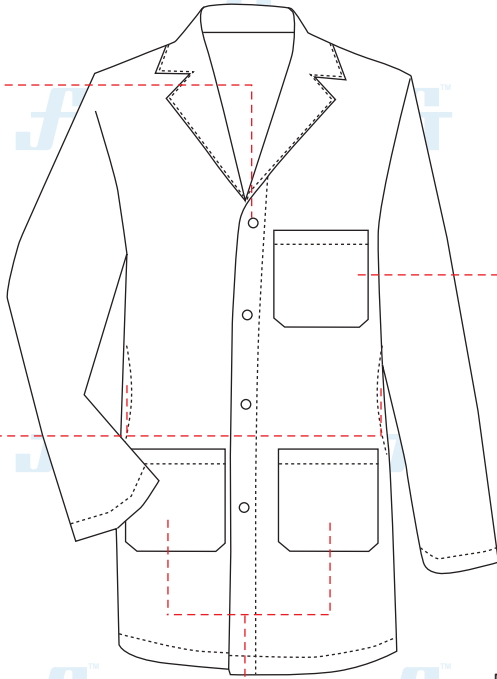
4 front plastic button
Size: 0.75 inches/19 mm



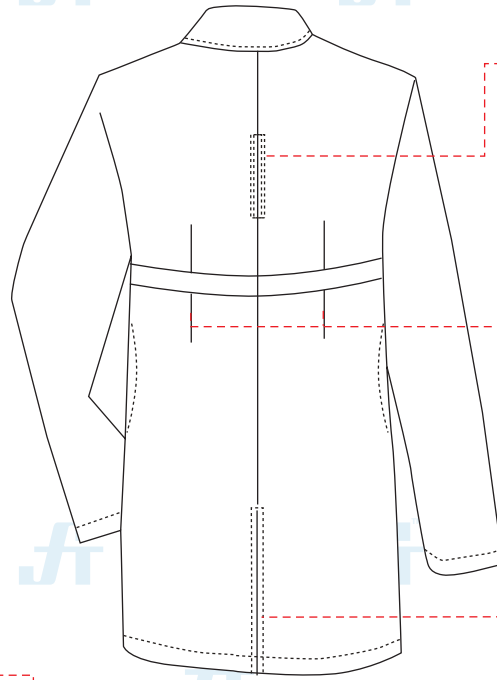
Side opening for ventilation
Size: 6.5 inches



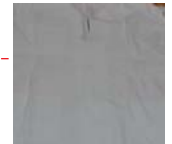
Two lower pockets



One chest pocket on the left chest



Opening on the back for ventilation with Black mesh fabric
Size: 6.5 inches

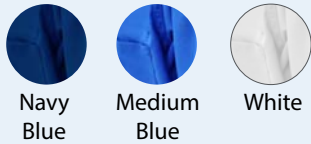


Two pleats on the back



Center back ventilation
Size: 16 inches long

COLOURS



SIZE CHART

	S	M	L	XL	2XL	3XL
Collar	14	14.5	15	15.5	16	16.5
Sleeve length	22	22.5	24	24	24.5	25
Shoulder	17	17	19	19	19.5	20
Chest	21	21.5	23	24	26	27
Length	19	19	19.5	20.5	21.5	22

*Size in inches

PPE CUSTOMIZATION PROGRAM



- Style and colour as per Client's requirements can be produced.
- Computerized embroidered company logo, name badges & job designation.
- EN 471 High-Viz Reflective Tape

COMPONENTS



Mesh fabric opening for ventilation



Stainless steel stud buttons



Center back vent for Mens side vent for Womens



PACKING

Each piece in polythene cover and 20 pcs. in seaworthy carton

Doc. Control:	Rev.: 3.2	Date: April 6, 2016
---------------	-----------	---------------------

This Article Data Sheet (ADS) is designed and produced by FLOWTRONIX (FT) covered under the intellectual property law. Any reproduction in whole or in part is strictly prohibited without written approval. FT IW 7013-3.2

