



INDUSTRIAL WORK SHIRT (FS)

Article No.: 0501SA40

This Work Shirt offers both comfort and durability making this one tough work shirt. Fully mercerized, wrinkle resistant, durable press finish and very breathable. This cotton shirt is the perfect for a wide variety of jobs. It's has two piece lined collar and a button closure at the neck. Available on various colors and customization options.



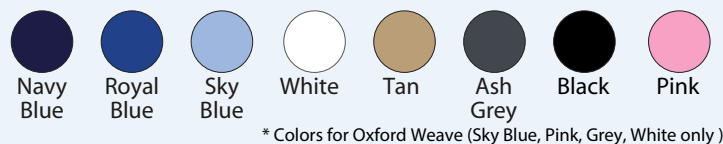
COMPOSITION

Fabric: 100% Cotton
 Weight: 180 GSM & 210 GSM
 Weaving: Plain/Twill Weave & Oxford Weave

STYLE & DESIGN

- Two chest pocket with button closure
- 7 Button front placket
- All stress point are bar tacked
- Semi-curved hem, sleeve placket & two pleats
- Adjustable two button cuff
- Superior color retention
- Optional: Button down collar & Sleeve pen slot

COLORS



SIZES

S | M | L | XL | XXL | 3XL | 4XL



Doc. Control:	Rev.: 3.2	Date: April 7, 2016
---------------	-----------	---------------------

This Article Data Sheet (ADS) is designed and produced by FLOWTRONIX (FT) covered under the intellectual property law. Any reproduction in whole or in part is strictly prohibited without written approval. FT IW 7069-3.2

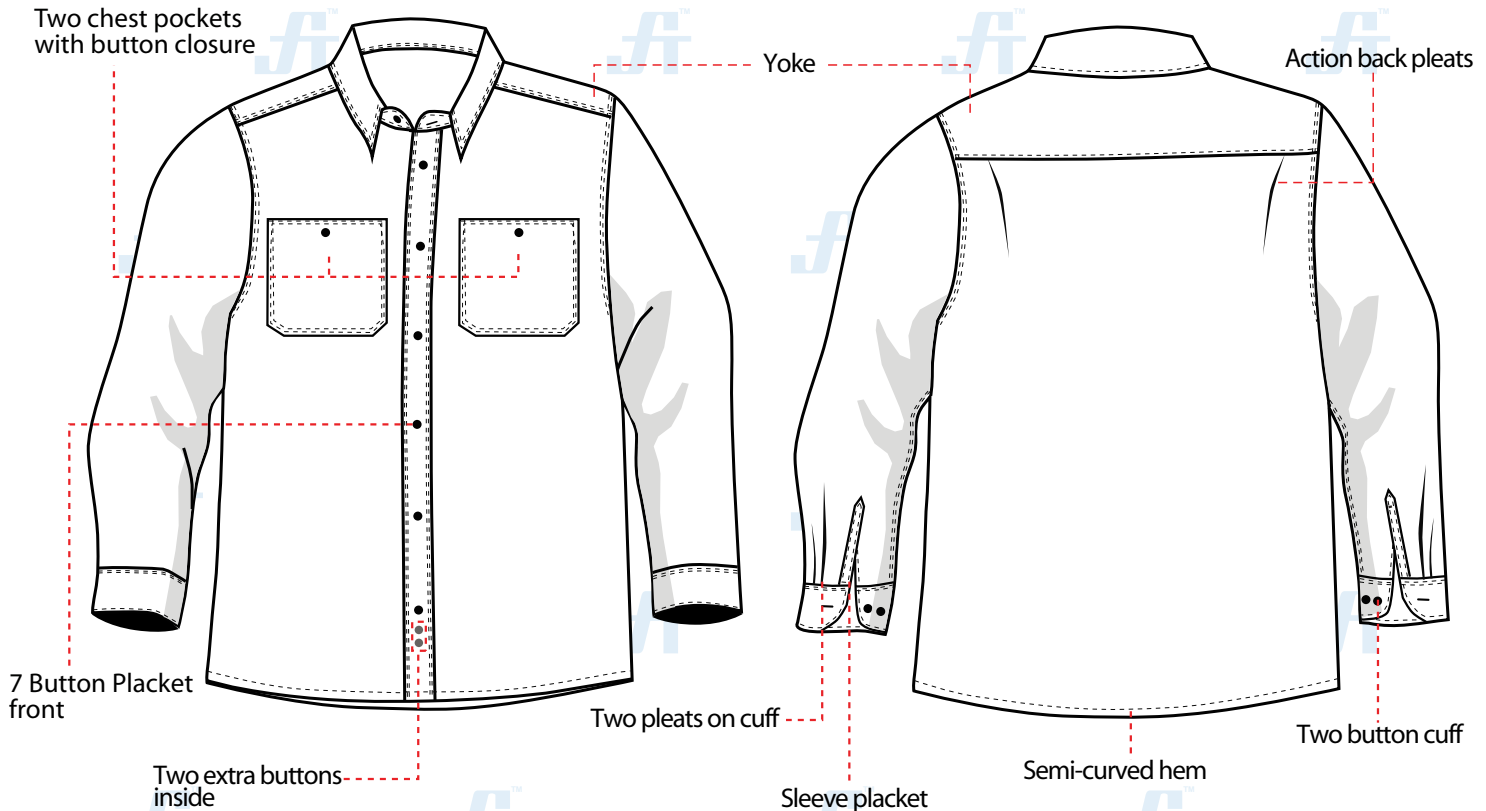




INDUSTRIAL WORK SHIRT (FS)

Article No.: 0501SA40

STYLE & DESIGN SPECIFICATIONS



COLORS



* Colors for Oxford Weave (Sky Blue, Pink, Grey, White only)

PPE CUSTOMIZATION PROGRAM



- Style and colour as per Client's requirements can be produced.
- Embroidered/Print company logo, name badges or job designation.
- EN 471 High-Viz Reflective Tape

SIZE CHART

36-38	40-42	44-46	48-50	52-54	56-58	60-62
S	M	L	XL	2XL	3XL	4XL

PACKING

Each piece in polythene cover and 20 pcs. in seaworthy carton

Doc. Control:	Rev.: 3.2	Date: April 7, 2016
---------------	-----------	---------------------

This Article Data Sheet (ADS) is designed and produced by FLOWTRONIX (FT) covered under the intellectual property law. Any reproduction in whole or in part is strictly prohibited without written approval. FT IW 7069-3.2

