



## WORK COVERALL

Article No.: 0104FT01

Supremo® Workwears is made of 65% Polyester & 35% Cotton. Lightweight garments that is breathable, comfortable and soft garment providing the best comfort throughout working hours. Eight (8) pockets design, very well stitched and bar tacked on all stress points. Available in most basic colours and can be customized as per client requirements.



### DESCRIPTION

Fabric: 65% Polyester, 35% Cotton

Weight: 150 - 170 gsm/sq. mtr.

- Fully Mercerized
- No Color Bleeding
- Fast Colour
- Cool & Comfortable

### STYLE & DESIGN

8 pockets design -

- Two chest pockets, patch pocket on the left & mobile pocket with flap on the right side
- Two rear patch pocket, Left pocket with button closure
- Two side pockets
- One tool pocket on the right leg
- Pencil slot (2 slots) on left sleeve
- Two way heavy duty nylon zipper
- Permanent sewn crease line
- Fabric belt with FT buckle clip
- Concealed elastic waist on backside
- Snap button on neck
- Hanging hook on collar
- All stress points are bar tacked



PPE CUSTOMIZATION PROGRAM

### COLORS



Red



Navy Blue



Medium Blue



Orange



Khaki



Yellow



Grey



Bottle Green

### SIZES

Small Medium Large XLarge 2X Large 3X Large 4X Large

Doc. Control:	Rev.:	Date:
	3.2	April 6, 2016

This Article Data Sheet (ADS) is designed and produced by FLOWTRONIX (FT) covered under the intellectual property law. Any reproduction in whole or in part is strictly prohibited without written approval. FT IW 7019-3.2



A PRODUCT OF

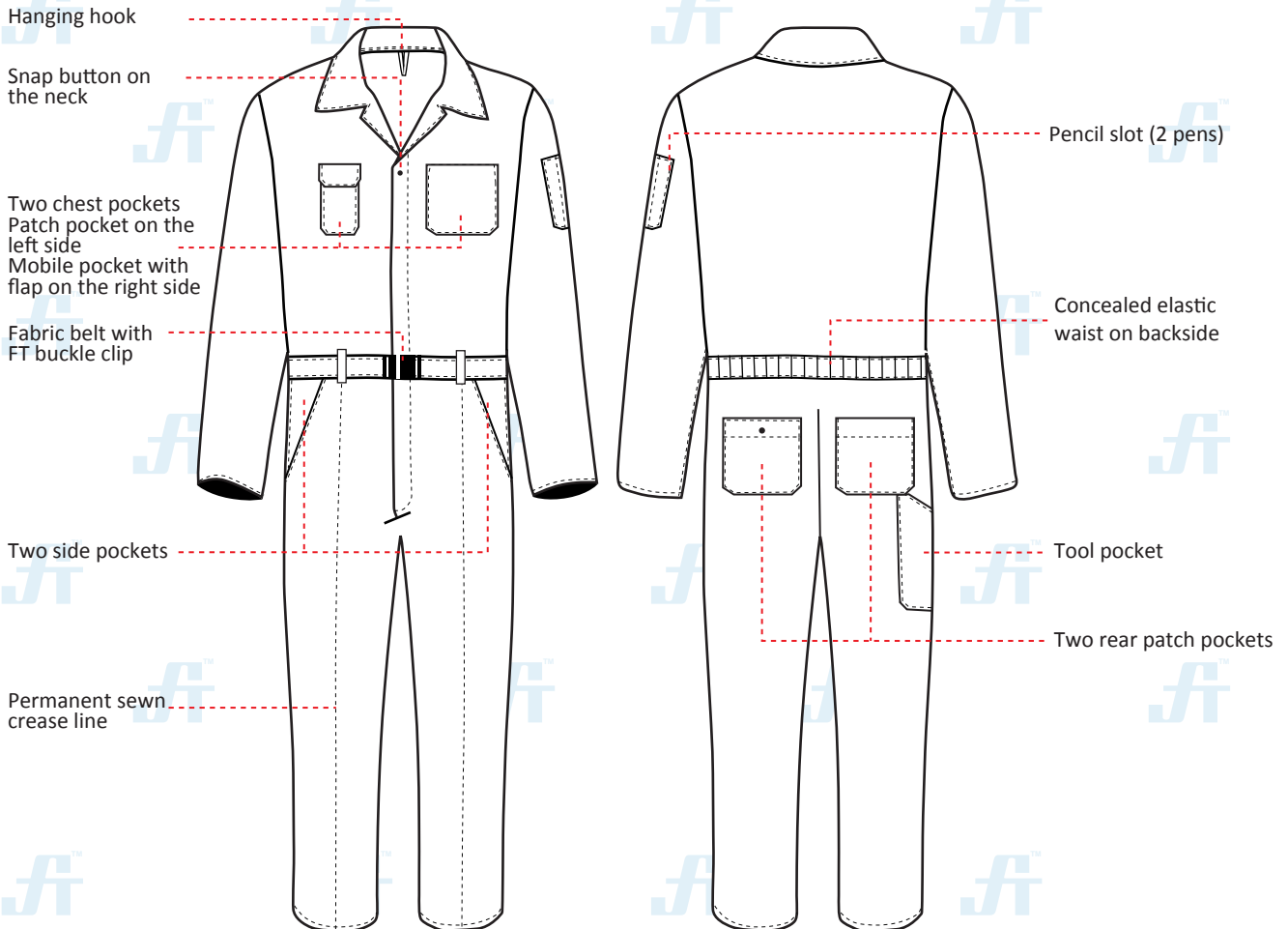




## WORK COVERALL

Article No.: 0104FT01

### STYLE & DESIGN SPECIFICATIONS



#### COLOURS



#### SIZE CHART

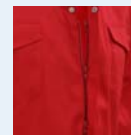
S	M	L	XL	2XL	3XL	4XL
36-38	40-42	44-46	48-50	52-54	56-58	60-62

#### PPE CUSTOMIZATION PROGRAM



- Style and colour as per Client's requirements can be produced.
- Computerized embroidered company logo, name badges & job designation.
- EN 471 High-Viz Reflective Tape

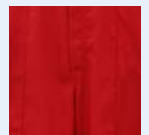
#### COMPONENTS



Two way heavy duty metallic zipper, snap button & storm flap closure



Concealed elastic waist on backside



Permanent sewn crease line

#### PACKING

Each piece in polythene cover and 20 pcs. in seaworthy carton

Doc. Control:	Rev.: 3.2	Date: April 6, 2016
---------------	-----------	---------------------

This Article Data Sheet (ADS) is designed and produced by FLOWTRONIX (FT) covered under the intellectual property law. Any reproduction in whole or in part is strictly prohibited without written approval. FT IW 7019-3.2

