

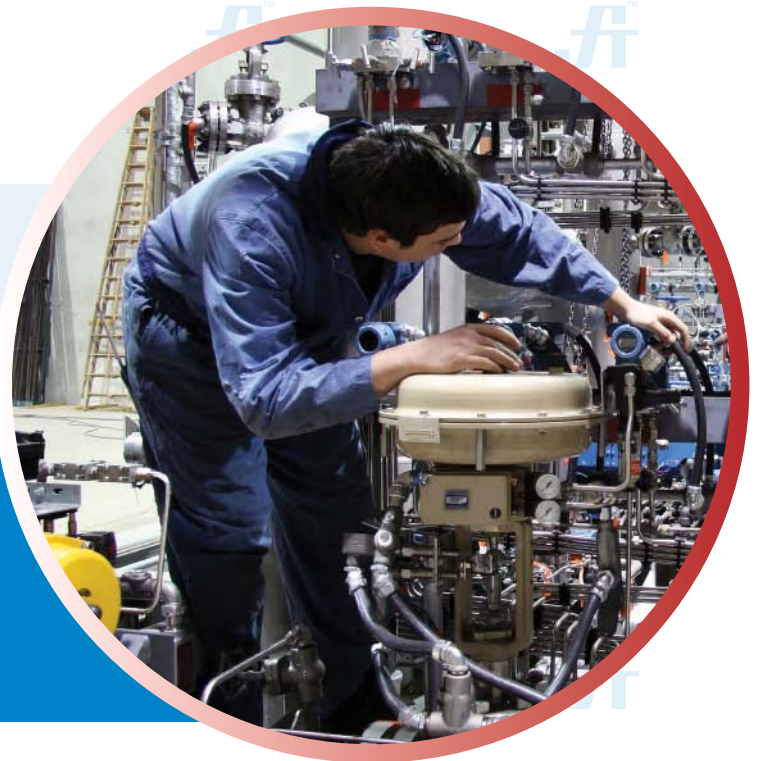
AirInATM
workwears

WORK COVERALL

Article No.: 0104AI01

AirinaTM is an innovative international workwear design brand, producing a wide-ranging collection of coveralls, work sets and accessories. Leader in pioneering new styles, fabrics, manufacturing methods and quality control to guarantee an outstanding product.

Over this period, protection with style has reached soaring heights as a concept thus furthering the axiom of "Strengthening the Sense of Safety" amongst the users. AirinaTM aim is to develop a sense of well-being and comfort amongst users working in different environments.



COMPOSITION

Fabric: 65% Polyester, 35% Cotton

Weight: 220 - 240 gsm

Fully mercerized, wrinkle resistant, durable press finish & very breathable.

STYLE & DESIGN

- 8 Pockets Design -
 - Two chest pockets, one with flap & pencil slot on the left / Two side pockets
 - Two rear pockets, one with flap on the right / One tool pocket on the right leg
- With "pass through" to access the inner garment
- Fully double stitched & all stress points are bar tacked
- Action back allowing maximum body movement
- Full sleeves with adjustable cuffs
- Permanent sewn crease line
- Snap button neck closure
- With hanging hook on collar
- Two way heavy duty metallic zipper, snap button & storm flap closure
- Concealed elastic waist on backside
- Colour Fastness 4-5 & Easy care
- All metal parts are fully concealed

KEY FEATURES



URSPEC

PPE CUSTOMIZATION PROGRAM

"Strengthening the Sense of Safety"

Doc. Control:	Rev.:	Date:
	3.2	April 6, 2016

This Article Data Sheet (ADS) is designed and produced by FLOWTRONIX (FT) covered under the intellectual property law. Any reproduction in whole or in part is strictly prohibited without written approval. FT IW 7010-3.2

A PRODUCT OF

A
PROTECTIVE LINE

AirInA™

workwears

WORK COVERALL

Article No.: 0104AI01

STYLE & DESIGN SPECIFICATIONS

Pen pocket with 2 slot

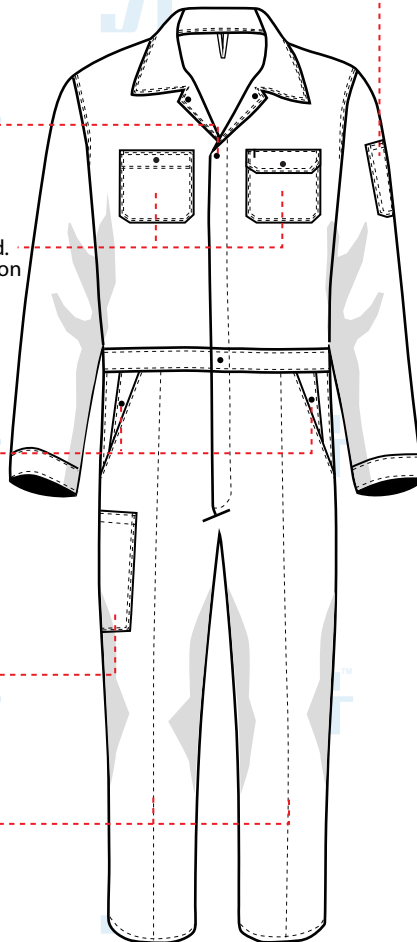
Two way heavy duty YKK zipper, stormflap & concealed metallic snap button closure

Two chest pockets
Left chest pocket with flap cover, pencil slot and snap button locked.
Right chest pocket with snap button lock without flap cover.

Two side pockets with "pass through" to access the inner garment

One tool pocket

Permanent sewn crease line

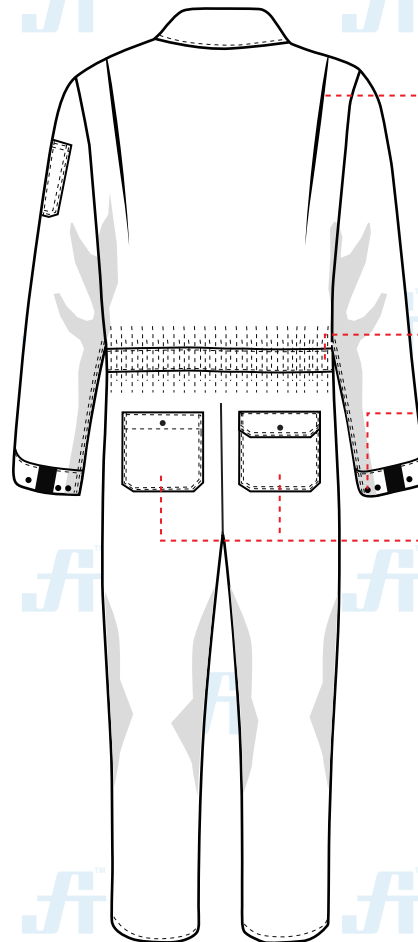


Action back pleats

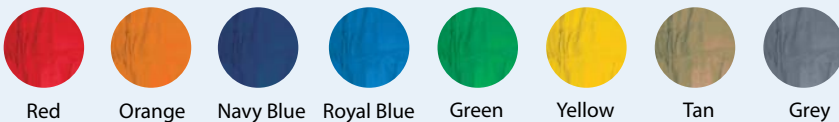
Elastic waist on the back

Adjustable cuffs with concealed snap buttons

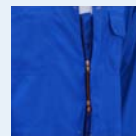
Two rear pockets
Right pocket with flap cover & snap button lock.
Left pocket with snap button lock without flap cover.



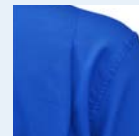
COLOURS



COMPONENTS



Two way heavy duty metallic zipper, snap button & storm flap closure



Action back allowing maximum body movement



Concealed elastic waist on backside.

SIZE CHART

S	M	L	XL	2XL	3XL	4XL
36-38	40-42	44-46	48-50	52-54	56-58	60-62

PPE CUSTOMIZATION PROGRAM



- Style and colour as per Client's requirements can be produced.
- Computerized embroidered company logo, name badges & job designation.
- EN 471 High-Viz Reflective Tape

PACKING

Each piece in polythene cover and 20 pcs. in seaworthy carton

"Strengthening the Sense of Safety"

Doc. Control:	Rev.:	Date:
	3.2	April 6, 2016

This Article Data Sheet (ADS) is designed and produced by FLOWTRONIX (FT) covered under the intellectual property law. Any reproduction in whole or in part is strictly prohibited without written approval. FT IW 7010-3.2

