

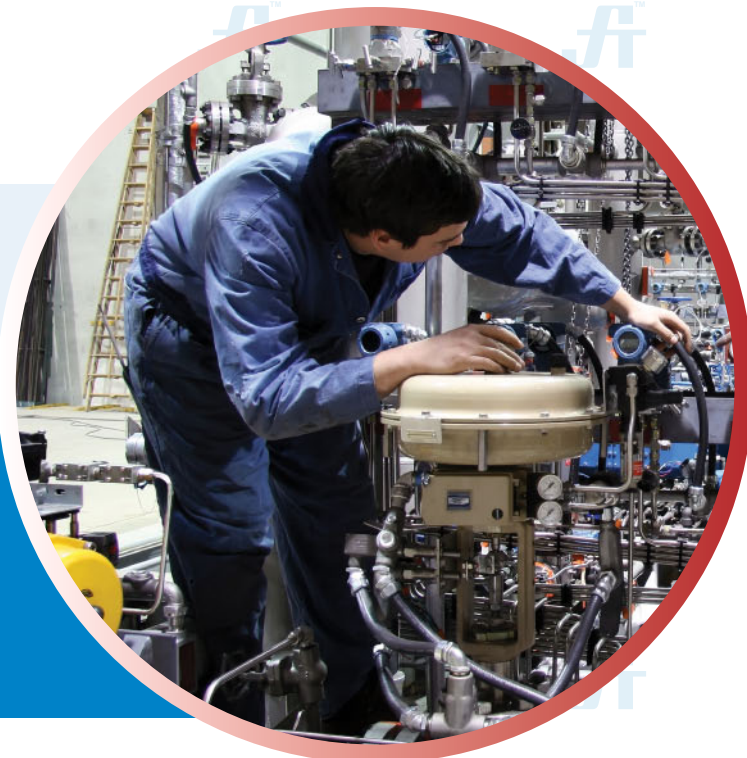


WORK COVERALL

Article No.: 0103BU01

Buckler® Premium Workwears are made from 100% cotton fabric that is durable press-finish, follow process at highest standards. Fully mercerized, wrinkle resistant and very breathable. Gives best comfort to users on various working environments.

A generous fit to shoulders and chest, action back, has eight (8) pockets design, two way zipper closure on front. Available on different colors and can be customized as required.



COMPOSITION

Fabric: 100% Cotton

Weight: 200 gsm

Fully mercerized, wrinkle resistant, durable press finish & very breathable.

STYLE & DESIGN

- 8 Pockets Design -
 - Two chest pockets, one with flap & pencil slot on the left / Two side pockets
 - Two rear pockets, one with flap on the right / One tool pocket on the right leg
- With "pass through" to access the inner garment
- Fully double stitched & all stress points are bar tacked
- Action back allowing maximum body movement
- Full sleeves with adjustable cuffs
- Permanent sewn crease line
- Snap button neck closure
- With hanging hook on collar
- Two way heavy duty metallic zipper, snap button & storm flap closure
- Concealed elastic waist on backside.
- Colour Fastness 4-5 & Easy care.
- All metal parts are fully concealed.



PPE CUSTOMIZATION PROGRAM

KEY FEATURES



100% Cotton



Breathable



Wrinkle Resistant



Suitable for Industrial Laundry

Doc. Control:	Rev.:	Date:
	3.2	April 6, 2016

This Article Data Sheet (ADS) is designed and produced by FLOWTRONIX (FT) covered under the intellectual property law. Any reproduction in whole or in part is strictly prohibited without written approval. FT IW 7022-3.2





WORK COVERALL

Article No.: 0103BU01

STYLE & DESIGN SPECIFICATIONS

Pen pocket with 2 slot

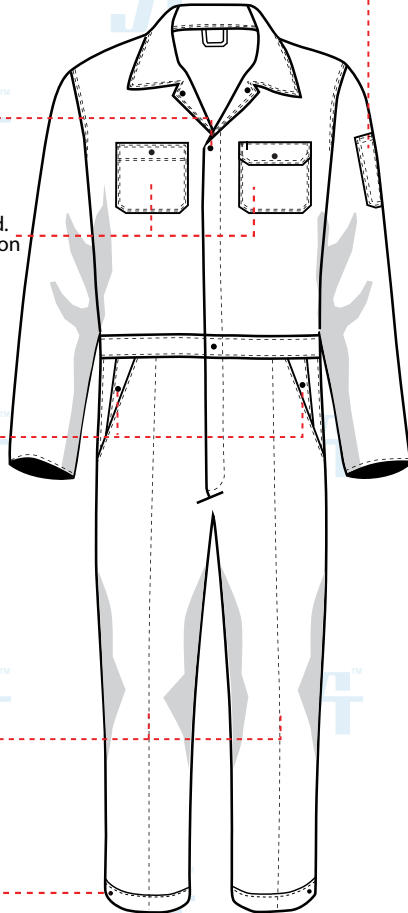
Two way heavy duty YKK zipper, stormflap & concealed metallic snap button closure

Two chest pockets
Left chest pocket with flap cover, pencil slot and snap button locked.
Right chest pocket with snap button lock without flap cover.

Two side pockets with "pass through" to access the inner garment

Permanent sewn crease line

Adjustable hem with concealed snap button



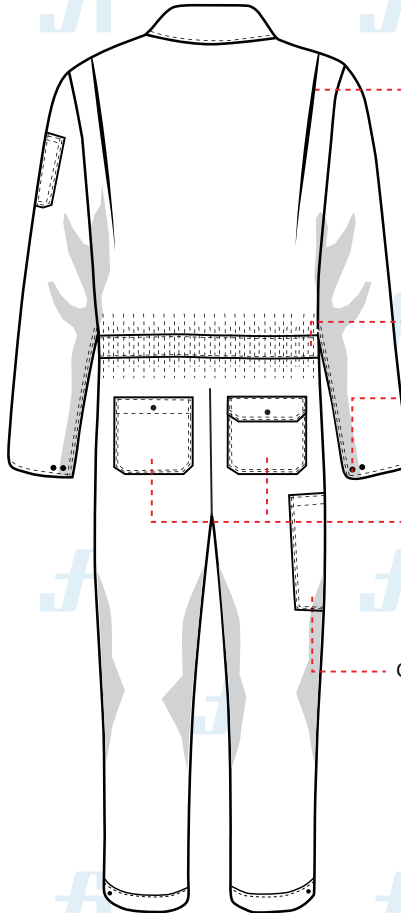
Action back pleats

Elastic waist on the back

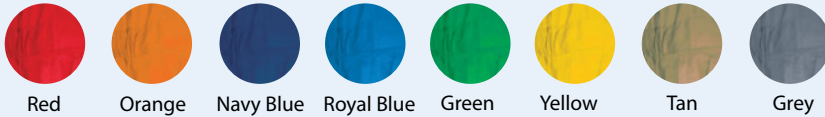
Adjustable cuffs with concealed snap buttons

Two rear pockets
Right pocket with flap cover & snap button lock.
Left pocket with snap button lock without flap cover.

One tool pocket



COLOURS



COMPONENTS



Two way heavy duty metallic zipper, snap button & storm flap closure

Concealed elastic waist on backside

Action back allowing maximum body movement

SIZE CHART

S	M	L	XL	2XL	3XL	4XL
36-38	40-42	44-46	48-50	52-54	56-58	60-62

PPE CUSTOMIZATION PROGRAM



- Style and colour as per Client's requirements can be produced.
- Computerized embroidered company logo, name badges & job designation.
- EN 471 High-Viz Reflective Tape

PACKING

Each piece in polythene cover and 20 pcs. in seaworthy carton

Doc. Control:	Rev.: 3.2	Date: April 6, 2016
---------------	-----------	---------------------

This Article Data Sheet (ADS) is designed and produced by FLOWTRONIX (FT) covered under the intellectual property law. Any reproduction in whole or in part is strictly prohibited without written approval. FT IW 7022-3.2

