



## WORK COVERALL

Article No.: 0101FT01P

Supremo® Premium XP is made of durable and comfortable 100% Super Fine Cotton, that are best for on and off the job. Absorbent and soft garment providing the best comfort throughout working hours. Bi-swing back designed for easy movement. Eight (8) pockets design, very well stitched and bar tacked on all stress points. Available in most basic colours and can be customized as per client requirements.



### DESCRIPTION

Fabric: 100% Super Fine Cotton  
Weight: 220 - 240 gsm/sq. mtr.

- Fully Mercerized
- Heavy Duty Garment
- Fast Colour
- Cool & Comfortable

100%  
SUPER FINE  
COTTON

### STYLE & DESIGN

- 8 Pockets Design - Two chest pockets / Two side pockets with pass through Two rear pockets / One tool pocket on the right leg Pen pocket on left sleeve
- Two way heavy duty metallic zipper, snap button & storm flap
- Bi-swing back allowing maximum body movement & comfort
- Full sleeves with adjustable cuffs
- Permanent sewn crease line
- Concealed elastic waist on backside
- All stress points are bar tacked
- All metal parts are fully concealed

**URSPEC**

PPE CUSTOMIZATION  
PROGRAM

### COLORS



Red



Navy  
Blue



Medium  
Blue



Orange



Khaki



Yellow



Grey



Bottle  
Green

### INTERNATIONAL STANDARDS

Confirms to EN regulations. This garment satisfies the fundamental requirements in relation to the **European directive 89/686 (art.8 Ph.3)** as regards Ergonomy, No noxiousness & Comfort.

Doc. Control:	Rev.:	Date:
	3.2	April 6, 2016

This Article Data Sheet (ADS) is designed and produced by FLOWTRONIX (FT) covered under the intellectual property law. Any reproduction in whole or in part is strictly prohibited without written approval. FT IW 7018-3.2



A PRODUCT OF

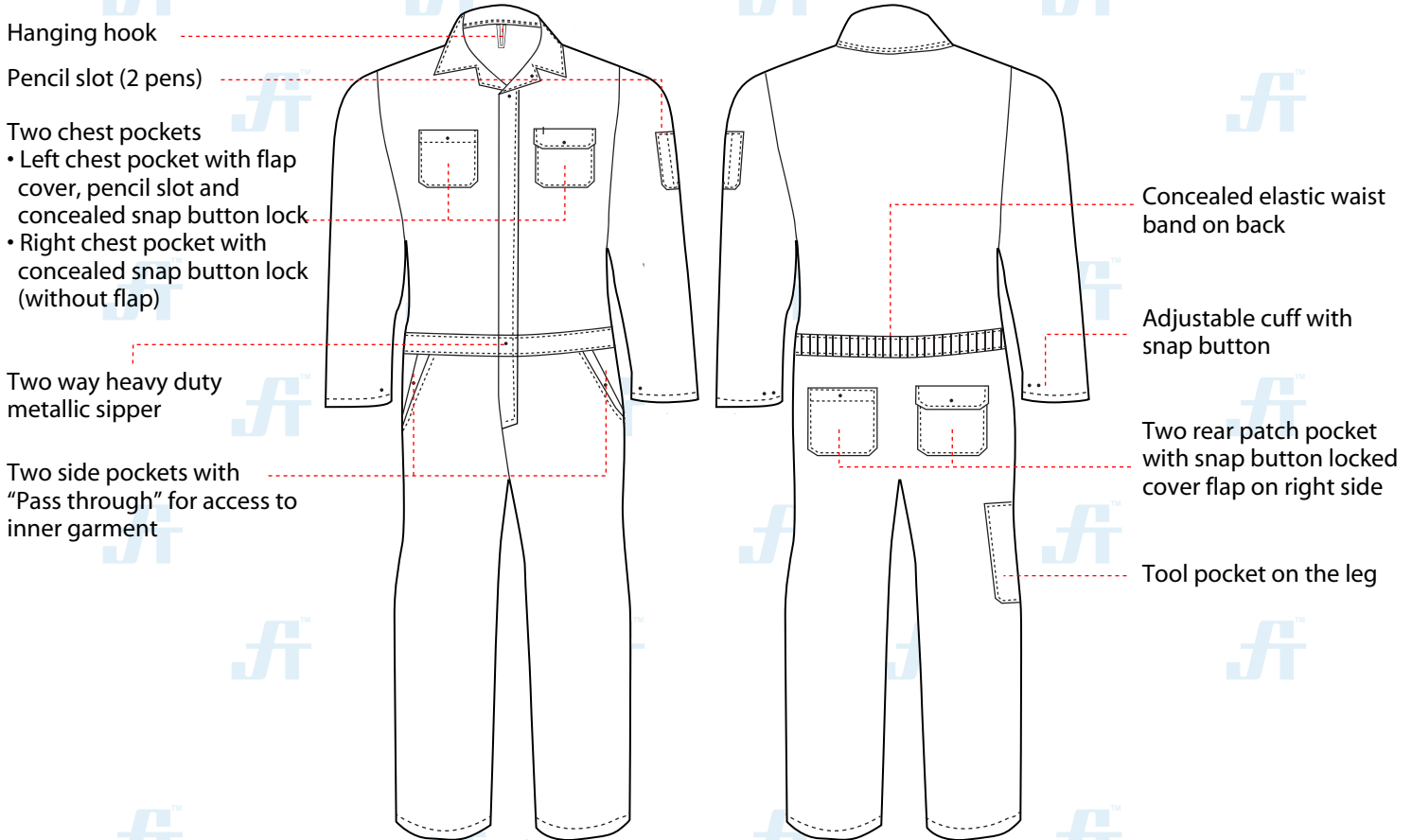




## WORK COVERALL

Article No.: 0101FT01P

### STYLE & DESIGN SPECIFICATIONS



#### COLOURS



#### SIZE CHART

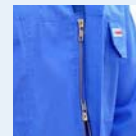
S	M	L	XL	2XL	3XL	4XL
36-38	40-42	44-46	48-50	52-54	56-58	60-62

#### PPE CUSTOMIZATION PROGRAM

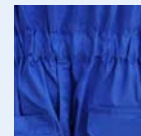
- Style and colour as per Client's requirements can be produced.
- Computerized embroidered company logo, name badges & job designation.
- EN 471 High-Viz Reflective Tape



#### COMPONENTS



Two way heavy duty metallic zipper, snap button & storm flap closure



Concealed elastic waist on backside



Permanent sewn crease line



#### PACKING

Each piece in polythene cover and 20 pcs. in seaworthy carton

Doc. Control:	Rev.: 3.2	Date: April 6, 2016
---------------	-----------	---------------------

This Article Data Sheet (ADS) is designed and produced by FLOWTRONIX (FT) covered under the intellectual property law. Any reproduction in whole or in part is strictly prohibited without written approval. FT IW 7018-3.2

