



WORK TROUSER

Article No.: 04180PL01

Parma™ FR Cotton Workwears offers a high level of protection to welders without being as heavy as the leather alternative. This can be an advantage on worksites with high temperature & humidity levels. Constructed using premium 100% cotton treated with Proban® blend. Parma™ features flame-retardant properties, thermal protection, comfort and durability that meet industry workwear regulations.



AVIOR® Treated fabrics offer the best overall flame protection available for cotton, as proved by comprehensive testing in line with international flame retardant standards.

AVIOR® has an outstanding durability to wash and wear, which assures long life of the clothing. Features, flame retardant properties, oil and water repellency, resistance to static build-up.

COMPOSITION

Fabric Grade: AVIOR® AV 500 (99% Cotton, 1% Carbon Fiber)
Durable Proban® Flame Retardant Fabric
Fabric Weight: 210 gsm / 6.19 oz

STYLE & DESIGN

- Two front deep inset pockets
- Two large rear welt pockets with flap
- Heavy duty metallic zipper, hook & button closure
- Belt loops
- Bar tacked stress points
- Pleated front & permanent sewn crease line
- Diamond crotch allowing maximum body movement
- Garment is stitched with FR thread
- Colour Fastness 4-5 and Easy care
- All metal parts fully concealed



PPE CUSTOMIZATION PROGRAM

INTERNATIONAL STANDARDS

- EN ISO 11612:2008 (A1, A2, B1, C1, F1)
- EN 11611:2007
- EN 1149-5:2008
- ATPV - CAT 1

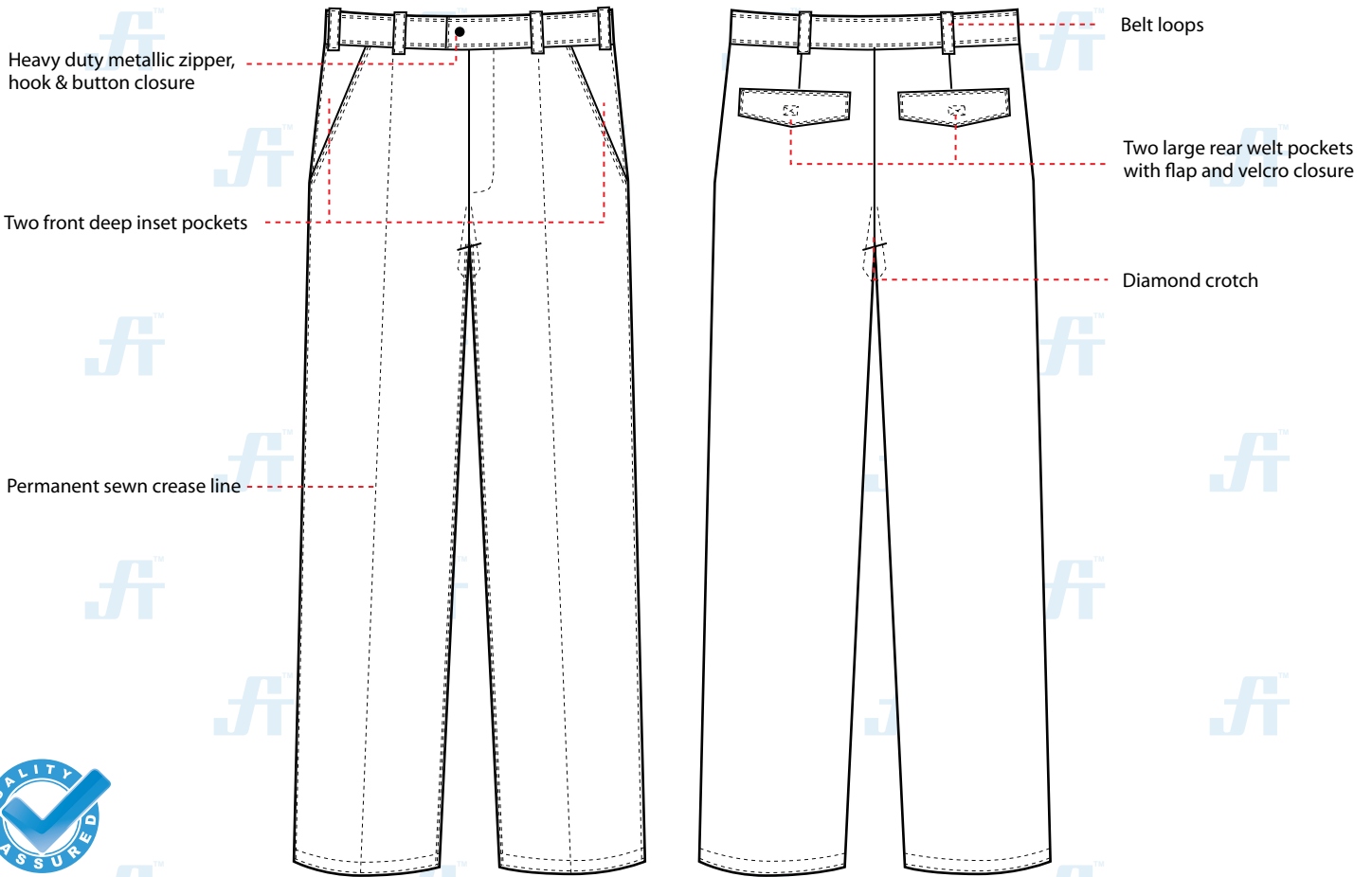


Doc. Control:	Rev.:	Date:
	3.2	April 3, 2016

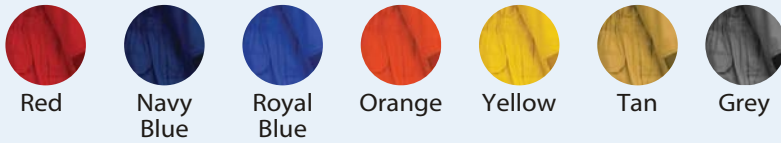
This Article Data Sheet (ADS) is designed and produced by FLOWTRONIX (FT) covered under the intellectual property law. Any reproduction in whole or in part is strictly prohibited without written approval. FT FR 6181-3.2



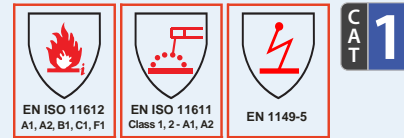
STYLE & DESIGN SPECIFICATIONS



COLOURS



INTERNATIONAL STANDARDS



SIZE CHART

Size	24	26	28	30	32	34	36	38	40	42	44	46	48	50	52	54	56	58	60	62
Waist	26"	28"	30"	32"	34"	36"	38"	40"	42"	44"	46"	48"	50"	52"	54"	56"	58"	60"	62"	64"
Inseam	30.5"	30.5"	31"	31"	31.5"	31.5"	31.5"	31.5"	31.5"	31.5"	31.5"	31.5"	31.5"	31.5"	31.5"	31.5"	32"	32"	32"	32"

PPE CUSTOMIZATION PROGRAM



- Style and colour as per Client's requirements can be produced.
- Computerized embroidered company logo, name badges & job designation.
- EN 471 High-Viz Reflective Tape

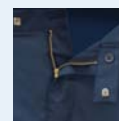
PACKING

Each piece in polythene cover and 20 pcs. in seaworthy carton

PACKING

Each piece in polythene cover and 20 pcs. in seaworthy carton

COMPONENTS



Heavy duty metallic zipper, hook & button closure



Pleated front & permanent sewn crease line



Diamond crotch allowing maximum body movement

AVIOR[®]



A PRODUCT OF



Doc. Control:	Rev.: 3.2	Date: April 3, 2016
---------------	-----------	---------------------

This Article Data Sheet (ADS) is designed and produced by FLOWTRONIX (FT) covered under the intellectual property law. Any reproduction in whole or in part is strictly prohibited without written approval. FT FR 6181-3.2