



WOMEN'S CLASSIC COAT

Article No.: 0680PL01-CC-W

Parma™ FR Cotton Workwears offers a high level of protection to welders without being as heavy as the leather alternative. This can be an advantage on worksites with high temperature & humidity levels. Constructed using premium 100% cotton treated with Proban® blend. Parma™ features flame-retardant properties, thermal protection, comfort and durability that meet industry workwear regulations.



Aspis FR® is a durable, lightweight and comfortable treated flame retardant fabric with the advantages of the superior breathability and absorbency of 100% Cotton. Like other natural fabrics, **Aspis FR®** provides durable and affordable flash fire protection for workers in the petroleum, petrochemical and other professionals that may be exposed to flash fire. The fabric absorbs and transmits moisture away from the body to keep the wearer dry & comfortable and performs well in a variety of climate applications. It is particularly suitable for use in warm working environments and climates including humid or summer season.

COMPOSITION

Fabric Grade: Aspis FR® AS 500 - 100% FR Cotton
Durable Proban® Flame Retardant Fabric
Fabric Weight: 210 gsm or 6.19 oz

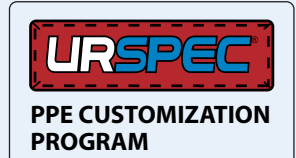
STYLE & DESIGN

- 10 Buttons front closure
- Concealed metallic snap button front closure
- Pencil slot on right sleeve
- Pleated back
- Knee length
- Adjustable cuffs
- Bar tacked stress points



INTERNATIONAL STANDARDS

- EN ISO 11612:2008 (A1, A2, B1, C1, F1)
- EN 340:2004
- NFPA-2112
- ISO 14116
- ISO 15025 A & B
- IEC 61482-1-1
- ATPV - CAT 1



ASPIS FR®
PROBAN



Doc. Control:	Rev.: 3.2	Date: April 3, 2016
---------------	-----------	---------------------

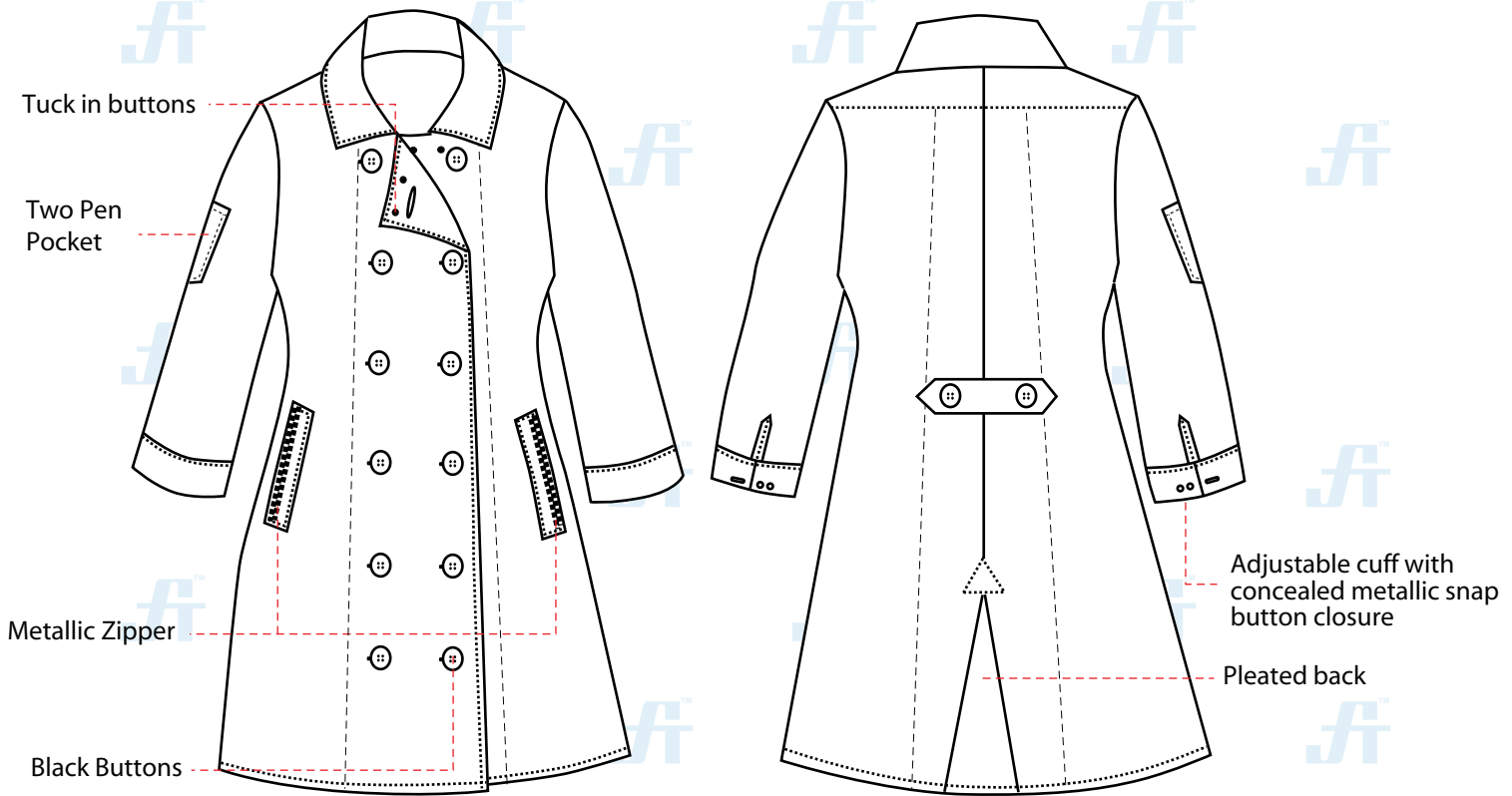
This Article Data Sheet (ADS) is designed and produced by FLOWTRONIX (FT) covered under the intellectual property law. Any reproduction in whole or in part is strictly prohibited without written approval. FT FR 6273-3.2



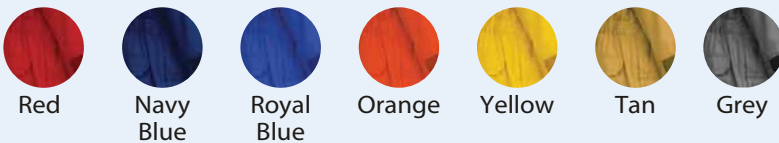
WOMEN'S CLASSIC COAT

Article No.: 0680PL01-CC-W

STYLE & DESIGN SPECIFICATIONS



COLOURS



SIZE CHART

S	M	L	XL	2XL	3XL	4XL	--	--
36-38	40-42	44-46	48-50	52-54	56-58	60-62	--	--

PPE CUSTOMIZATION PROGRAM

- Style and colour as per Client's requirements can be produced.
- Computerized embroidered company logo, name badges & job designation.
- EN 471 High-Viz Reflective Tape

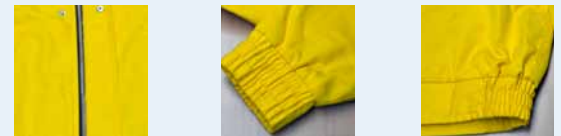
PACKING

Each piece in polythene cover and 20 pcs. in seaworthy carton

INTERNATIONAL STANDARDS



COMPONENTS



Heavy duty metallic zipper, snap button & storm flap closure

Elastic cuffs

Elastic waist on side

Elastic side waist

ASPIS FA[®]
PROBAN



A PRODUCT OF



Doc. Control:	Rev.: 3.2	Date: April 3, 2016
---------------	-----------	---------------------

This Article Data Sheet (ADS) is designed and produced by FLOWTRONIX (FT) covered under the intellectual property law. Any reproduction in whole or in part is strictly prohibited without written approval. FT FR 6273-3.2