



WORK LABCOAT

Article No.: 0980PL01

Parma™ FR Cotton Workwears offers a high level of protection to welders without being as heavy as the leather alternative. This can be an advantage on worksites with high temperature & humidity levels. Constructed using premium 100% cotton treated with Proban® blend. Parma™ features flame-retardant properties, thermal protection, comfort and durability that meet industry workwear regulations.



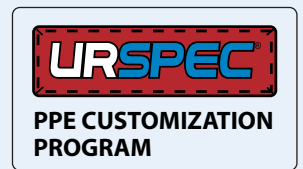
Aspis FR® is a durable, lightweight and comfortable treated flame retardant fabric with the advantages of the superior breathability and absorbency of 100% Cotton. Like other natural fabrics, **Aspis FR®** provides durable and affordable flash fire protection for workers in the petroleum, petrochemical and other professionals that may be exposed to flash fire. The fabric absorbs and transmits moisture away from the body to keep the wearer dry & comfortable and performs well in a variety of climate applications. It is particularly suitable for use in warm working environments and climates including humid or summer season.

COMPOSITION

Fabric Grade: Aspis FR® AS 500 - 100% FR Cotton
Durable Proban® Flame Retardant Fabric
Fabric Weight: 210 gsm or 6.19 oz

STYLE & DESIGN

- Four front chest pockets
- 2 Pencil slot on left sleeve
- Full one piece straight back
- Knee length
- Concealed metallic snap button front closure
- Adjustable cuff
- All stree points are bar tacked
- Double stitched with FR thread
- Colour fastness 4-5 & Easy care



INTERNATIONAL STANDARDS

- EN ISO 11612:2008 (A1, A2, B1, C1, F1)
- EN 340:2004
- NFPA-2112
- ISO 14116
- ISO 15025 A & B
- IEC 61482-1-1
- ATPV - CAT 1



Doc. Control:	Rev.:	Date:
	3.2	April 3, 2016

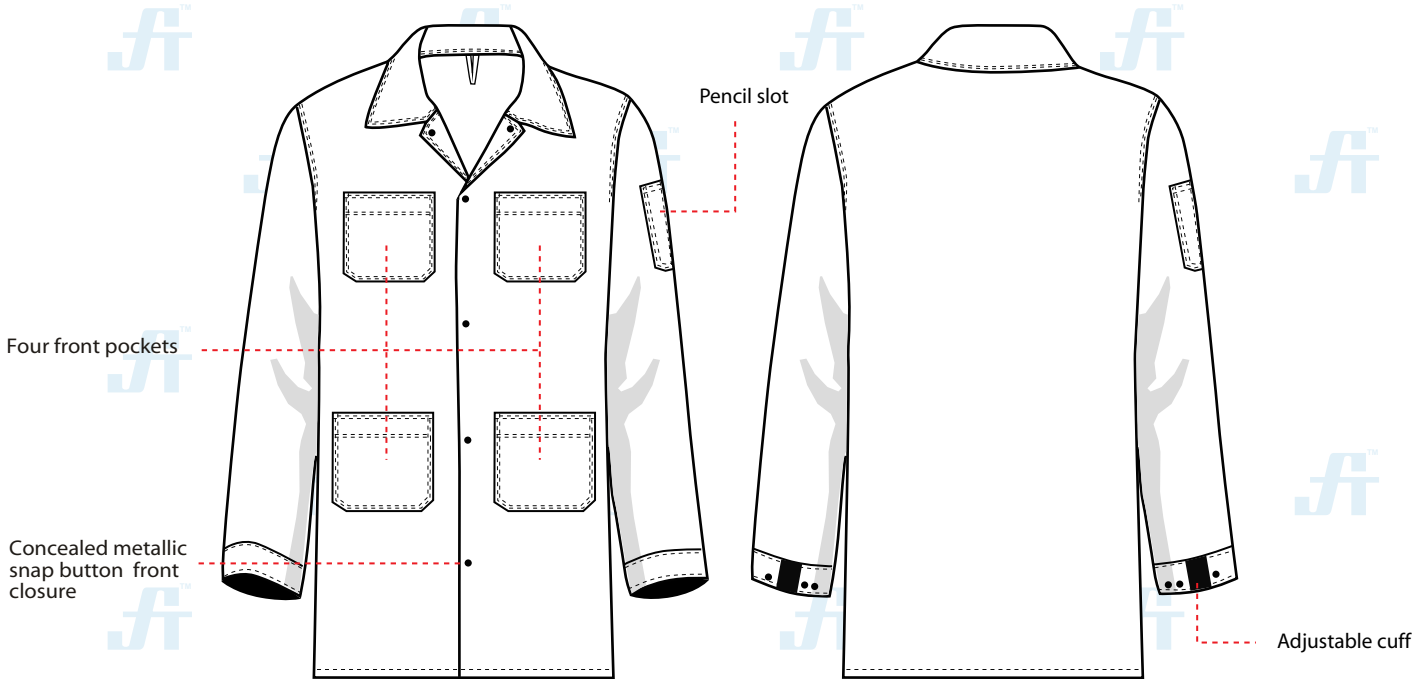
This Article Data Sheet (ADS) is designed and produced by FLOWTRONIX (FT) covered under the intellectual property law. Any reproduction in whole or in part is strictly prohibited without written approval. FT FR 6274-3.2



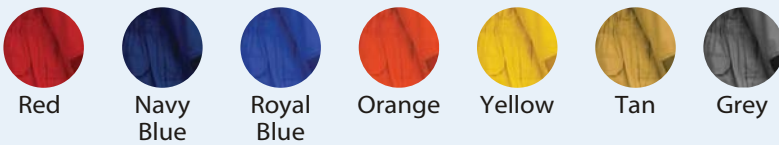
WORK LABCOAT

Article No.: 0980PL01

STYLE & DESIGN SPECIFICATIONS



COLOURS



SIZE CHART

S	M	L	XL	2XL	3XL	4XL	--	--
36-38	40-42	44-46	48-50	52-54	56-58	60-62	--	--

PPE CUSTOMIZATION PROGRAM



- Style and colour as per Client's requirements can be produced.
- Computerized embroidered company logo, name badges & job designation.
- EN 471 High-Viz Reflective Tape

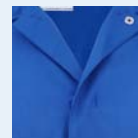
PACKING

Each piece in polythene cover and 20 pcs. in seaworthy carton

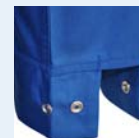
INTERNATIONAL STANDARDS



COMPONENTS



Concealed metallic snap button front closure



Adjustable cuffs



All stress points are bar tacked

ASPIS FA[®] PROBAN



A PRODUCT OF



Doc. Control:	Rev.:	Date:
	3.2	April 3, 2016

This Article Data Sheet (ADS) is designed and produced by FLOWTRONIX (FT) covered under the intellectual property law. Any reproduction in whole or in part is strictly prohibited without written approval. FT FR 6274-3.2