



WORK TROUSERS

Article No.: 04154FT01



Flash Armor® inherently flame-retardant and high temperature resistant garments do not support combustion in the air, melt or drip due to their molecular structure and its flame retardant characteristics cannot be washed away. Our range is designed to cater for working conditions around the world as garments are offered in various designs and options.

Flame resistant clothing made with **Flash Armor**® provides valuable peace-of-mind, which enables those who wear it to focus on the job at-hand & perform to their fullest potential.



HIGH DURABILITY TOGETHER WITH HIGH COMFORT

The lightweight fabric with heavyweight performance. New levels of wearer comfort, you have to feel it to believe it. As the name suggests, durability is a major feature ensuring a long-lasting garment.

- Permanently flame-resistant
- Extremely durable
- Permanently antistatic
- Excellent hand and comfortable garment

COMPOSITION

Fabric Grade: Targa® TRG 500
Composition: 45% Meta aramid / 44% FR Lenzing / 10% Polyamide / 1% Antistatic
Fabric Weight: 165 gsm or 4.9 oz

STYLE & DESIGN

- Two front deep inset pockets
- Two large rear welt pockets with flap
- Belt loops
- All stress points are bar tacked
- Heavy duty metallic zipper, hook & button closure
- Pleated front & permanent sewn crease line
- Diamond crotch allowing maximum body movement
- Double stitched with FR thread
- Colour fastness 4-5 & Easy care



INTERNATIONAL STANDARDS

- EN ISO 11612:2008 (A1, A2, B1, C1, F1)
- EN 1149-5:2008
- EN 61482-1-1
- NFPA 2112:2012
- ATPV (6,4 Cal/cm²) - CAT 1



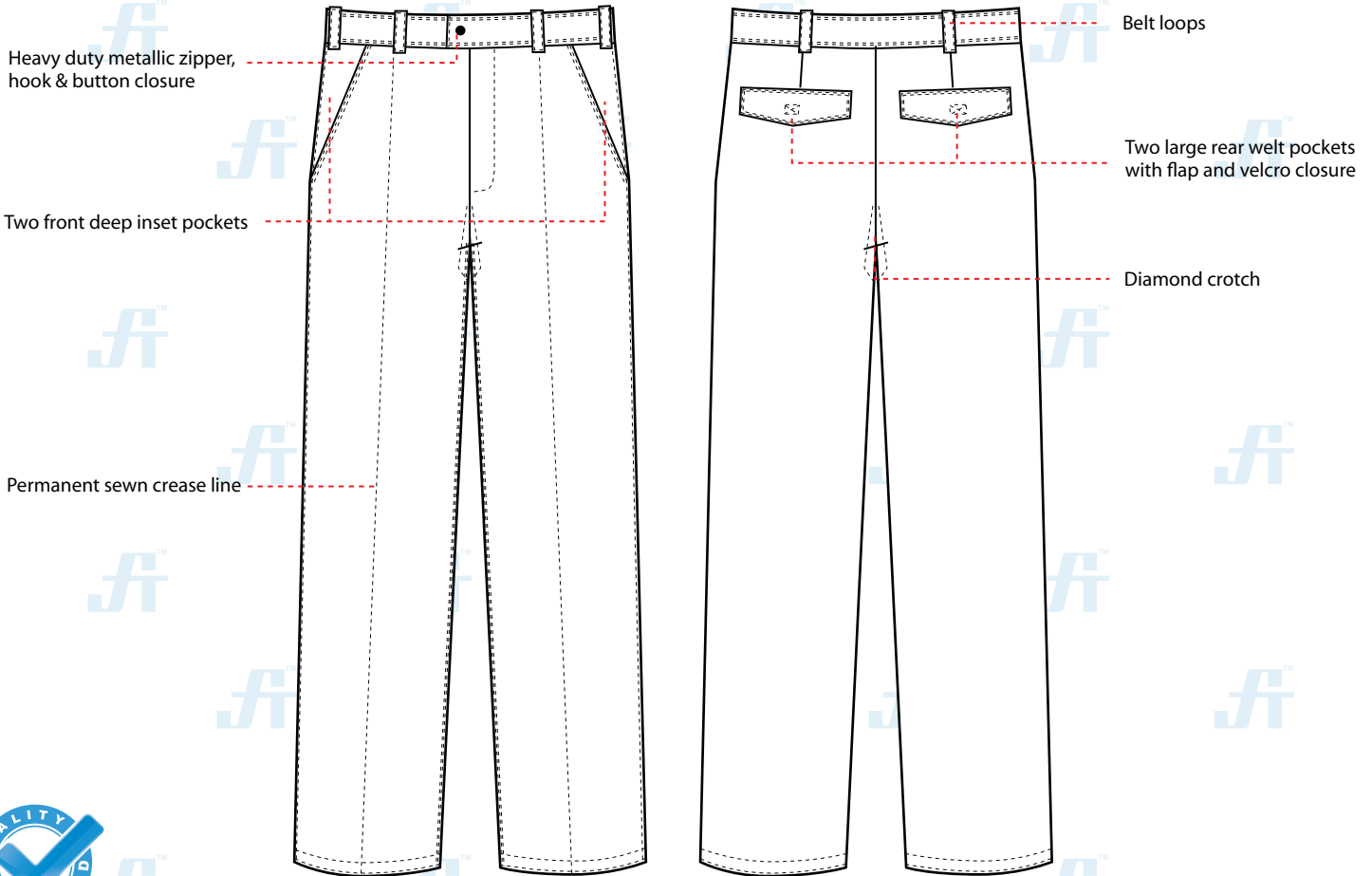
Doc. Control:	Rev.:	Date:
	3.2	April 2, 2016

This Article Data Sheet (ADS) is designed and produced by FLOWTRONIX (FT) covered under the intellectual property law. Any reproduction in whole or in part is strictly prohibited without written approval. FT FR 6111-3.2



WORK TROUSERS Article No.: 04154FT01

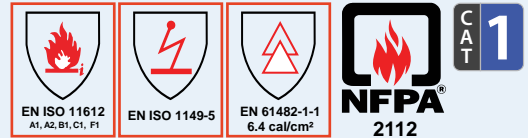
STYLE & DESIGN SPECIFICATIONS



COLOURS



INTERNATIONAL STANDARDS



SIZE CHART

Size	24	26	28	30	32	34	36	38	40	42	44	46	48	50	52	54	56	58	60	62
Waist	26"	28"	30"	32"	34"	36"	38"	40"	42"	44"	46"	48"	50"	52"	54"	56"	58"	60"	62"	64"
Inseam	30.5"	30.5"	31"	31"	31.5"	31.5"	31.5"	31.5"	31.5"	31.5"	31.5"	31.5"	31.5"	31.5"	31.5"	31.5"	32"	32"	32"	32"

PPE CUSTOMIZATION PROGRAM



- Style and colour as per Client's requirements can be produced.
- Computerized embroidered company logo, name badges & job designation.
- EN 471 High-Viz Reflective Tape

PACKING

Each piece in polythene cover and 20 pcs. in seaworthy carton

COMPONENTS



Heavy duty metallic zipper, hook & button closure



Pleated front & permanent sewn crease line



Diamond crotch allowing maximum body movement

TARGA®



A PRODUCT OF



Doc. Control:	Rev.:	Date:
	3.2	April 2, 2016

This Article Data Sheet (ADS) is designed and produced by FLOWTRONIX (FT) covered under the intellectual property law. Any reproduction in whole or in part is strictly prohibited without written approval. FT FR 6111-3.2