



WORK COVERALL

Article No.: 01205FT180



Flash Armor® inherently flame-retardant and high temperature resistant garments do not support combustion in the air, melt or drip due to their molecular structure and its flame retardant characteristics cannot be washed away. Our range is designed to cater for working conditions around the world as garments are offered in various designs and options.

Flame resistant clothing made with **Flash Armor**® provides valuable peace-of-mind, which enables those who wear it to focus on the job at-hand & perform to their fullest potential.



Spartex® is a high performance inherently flame-retardant fabric for industrial workwear, processed and constructed with premium fabric woven blend. Designed to help mitigate potential injuries due to electric arc and flash fire exposure, while providing enhanced durability and comfort. The combination of these capabilities makes it an ideal fabric for industrial workwear occupations in manufacturing, utilities, electrical maintenance, petrochemical, welding, and steel.

Spartex® has an enhance comfort and improve aesthetic qualities that delivers premium FR performance while enhancing worker comfort through improved breathability and optional stretch.

COMPOSITION

Fabric Grade: Spartex® SPX 400
Composition: 64% Lenzing FR / 30% Aramid / 5% PA / 1% Antistatic
Fabric Weight: 5.3 oz or 180 gsm



STYLE & DESIGN

- 9 Pockets Design - Two chest pockets, one with flap & pencil slot on the left / Two side pockets / One mobile pocket with pen slot / Two rear pockets, one with flap on the right / One cargo pocket / One tool pocket on the right leg
- With "pass through" to access the inner garment
- Two way heavy duty YKK Nylon coil zipper, stormflap & concealed plastic snap button closure
- Fully double stitched and bar tacked stress points
- Action back allowing maximum body movement
- Full sleeves with adjustable cuffs
- With high visibility reflective tapes
- Permanent sewn crease line
- Snap button neck closure with hanging loop on collar
- Concealed elastic waist on backside
- Stitched with FR thread
- Colour Fastness 4-5 and Easy care



PPE CUSTOMIZATION PROGRAM

INTERNATIONAL STANDARDS

- EN ISO 11612:2010 (A1, A2, B1, C1, F1)
- EN 61482-1-1 & 61482-1-2
- NFPA-2112 & 70E
- ATPV (9,4 cal/cm²) - CAT 2
- EN 11611:2007
- EN 1149-5:2008



SPARTEX®



A PRODUCT OF



Doc. Control:	Rev.: 3.2	Date: April 2, 2016
---------------	-----------	---------------------

This Article Data Sheet (ADS) is designed and produced by FLOWTRONIX (FT) covered under the intellectual property law. Any reproduction in whole or in part is strictly prohibited without written approval. FT FR 6228-3.2



WORK COVERALL Article No.: 01205FT180

STYLE & DESIGN SPECIFICATIONS

Mobile pocket with pen slot

Two way heavy duty YKK Nylon coil zipper, stormflap & concealed plastic snap button closure

Two hex-shaped chest pockets with flap and concealed plastic snap buttons. Left chest pocket with pen slot.

Two side pockets with "pass through" to access the inner garment (concealed plastic snap button closure)

Left side cargo pocket with flap and velcro closure

Permanent sewn crease line

Action back pleats down to waistline

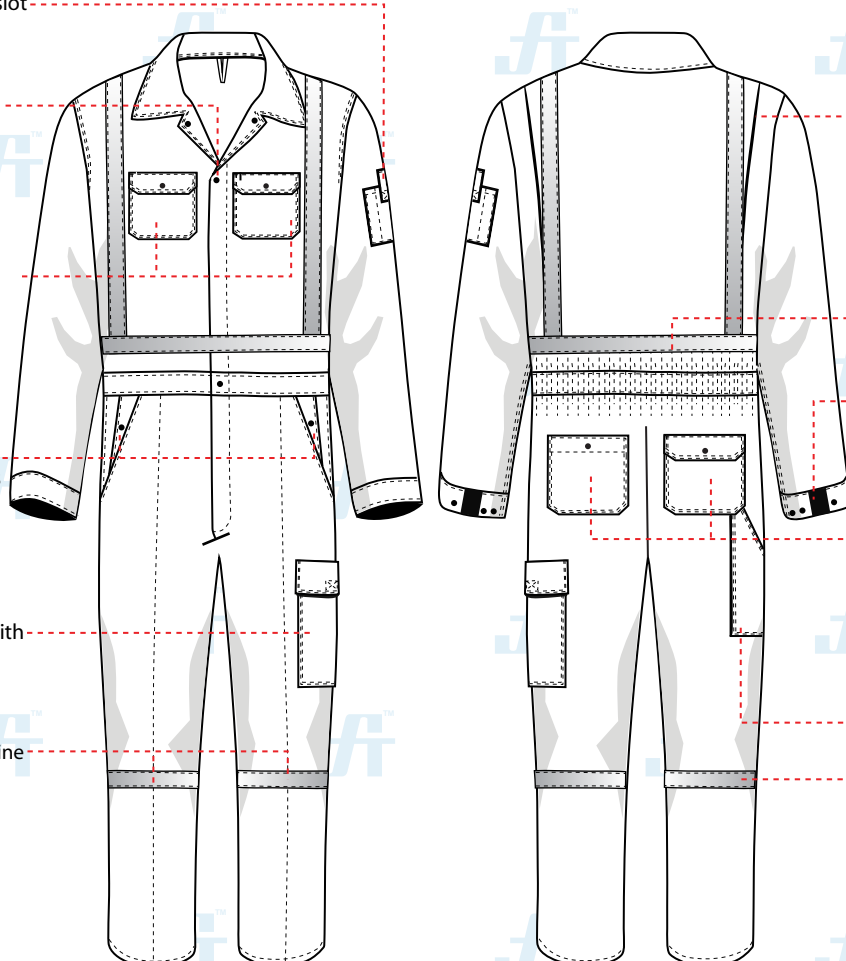
Elastic waist backside

Adjustable cuffs with plastic snap buttons

Two rear pockets
Right pocket with flap cover & concealed plastic snap button lock.
Left pocket with plastic snap button lock without flap cover.

One tool pocket

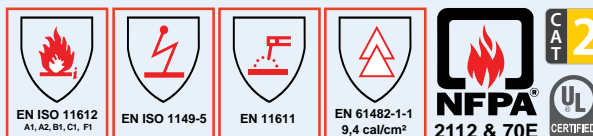
1" reflective tapes



COLOURS



INTERNATIONAL STANDARDS



SIZE CHART

Standard Sizes							Special Sizes	
S	M	L	XL	2XL	3XL	4XL	5XL	6XL
36-38	40-42	44-46	48-50	52-54	56-58	60-62	64-66	68-70

*Note: Special sizes are subject to price change

PPE CUSTOMIZATION PROGRAM

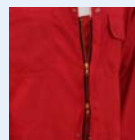
- Style and colour as per Client's requirements can be produced.
- Computerized embroidered company logo, name badges & job designation.
- EN 471 High-Vis Reflective Tape



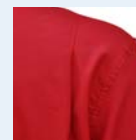
PACKING

Each piece in polythene cover and 20 pcs. in seaworthy carton

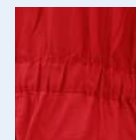
COMPONENTS



Two way heavy duty plastic zipper, snap button & storm flap closure



Action back allowing maximum body movement



Concealed elastic waist on backside

Doc. Control:	Rev.: 3.2	Date: April 2, 2016
---------------	-----------	---------------------

This Article Data Sheet (ADS) is designed and produced by FLOWTRONIX (FT) covered under the intellectual property law. Any reproduction in whole or in part is strictly prohibited without written approval. FT FR 6228-3.2

