



BOWSER

Model No: STD-MH-P-1200L

This unit is ideal for applications where there is no mains water supply available and can be towed to any remote area where maintenance work is being carried out where hazardous chemicals are present and when safety showers are not available. This unit will provide in excess of 15 minutes of continuous tepid water supply in accordance with ANSI Z358.1 - 2009.



Heated and Self-Contained Mobile Shower and Eye/Facewash with Submersible Water Pump

KEY FEATURES

- Simple hand operated Shower and Eye/Facewash
- Stainless Steel Shower pipework
- Submersible electric pump
- Water immersion heater
- Maintains heated water for up to 12 hours
- Heavy duty galvanised trailer unit
- 1200 litre unit with single axle (twin axle available)
- Rigid safety sign with bracket
- Trailer weight (unladen): 260Kg
- Trailer weight (full): 1460Kg

Has a capacity of approximately 1200 litres and gives a constant flow of water for up to 15 minutes. The 1200 litre green polyethylene tank incorporates an electric submersible pump which requires either a mains or generator-fed electricity supply. An integral immersion heater, controlled by a dual safety thermostat, maintains the water in the tank at a constant temperature.

The tank can be filled with potable water by hose and then transported to location behind a suitable motor vehicle using the standard ball type towing hitch provided. The tank is mounted on a heavy-duty galvanised mild steel frame and has two braked wheels fitted with standard trailer-type pneumatic tyres.

Equipment should be installed within 10 seconds reach of a hazard in case an accident occurs; no closer than 3 metres or further than 15 metres.

The area around and underneath the shower should provide good drainage, especially if there is a possibility of the water freezing when equipment is located outdoors.



Manufactured according to
ANSI Z358.1 - 2014

Doc. Control:	Rev.:	Date:
	3.2	April 11, 2016

This Article Data Sheet (ADS) is designed and produced by FLOWTRONIX (FT) covered under the intellectual property law. Any reproduction in whole or in part is strictly prohibited without written approval. FT FR 6050-3



HUGHES



BOWSER

Model No: STD-MH-P-1200L

INSTALLATION INSTRUCTIONS

1. Fill unit with clean potable water
2. Connect the power to the unit and leave for a minimum 6-8 hours to warm the water
3. The immersion heater power rating is 3Kw @ 240V & 1.7Kw @ 110V 1Ph 50/60Hz
4. Position unit in desired location
5. Ensure brakes on the unit are applied
6. Connect shower pipework to the operating valve on the unit
7. Ensure shower valve lever is in upright position (closed)
8. Connect electricity supply
9. Test unit to verify proper operation
10. Unit is now ready to be used

MAINTENANCE INSTRUCTIONS

1. Empty contained water regularly or after use
 2. Unit should be serviced and cleaned regularly, at least every six months to ensure proper operation
 3. Clean shower with non-abrasive cleaners only
 4. Remove overhead shower nozzle, inspect and disinfect every six months
 5. Remove eye/facewash nozzles, inspect and disinfect every six months (replace regularly)
 6. Regular checks of all fastenings fixings
 7. Regularly check all electrical equipment and connections
- Note: Empty all water when storing

OPERATING INSTRUCTIONS

1. Operate shower handle downwards to operate shower
2. Pull lid of eye/facewash downwards to operate
3. After use seek medical assistance



OPTIONAL FITTINGS



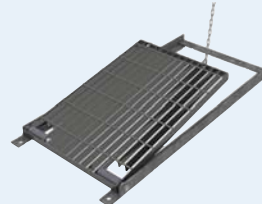
• Eyewash Sign -Wall Mounted



• Eye/Facewash Proximity Switch



• Hand Held Eye, Face and Body Shower Unit



• Panel Foot Control



• Shower Proximity Switch

Doc. Control:	Rev.:	Date:
	3.2	April 11, 2016

This Article Data Sheet (ADS) is designed and produced by FLOWTRONIX (FT) covered under the intellectual property law. Any reproduction in whole or in part is strictly prohibited without written approval. FT FR 6050-3

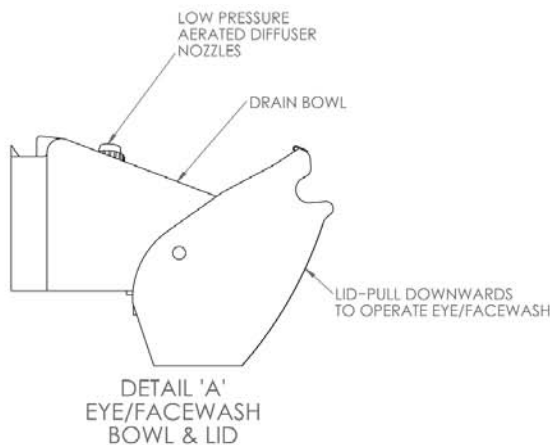
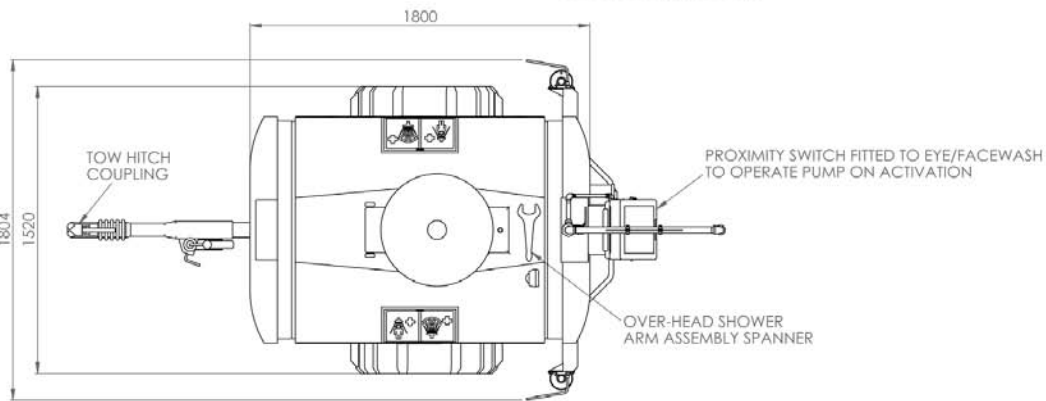
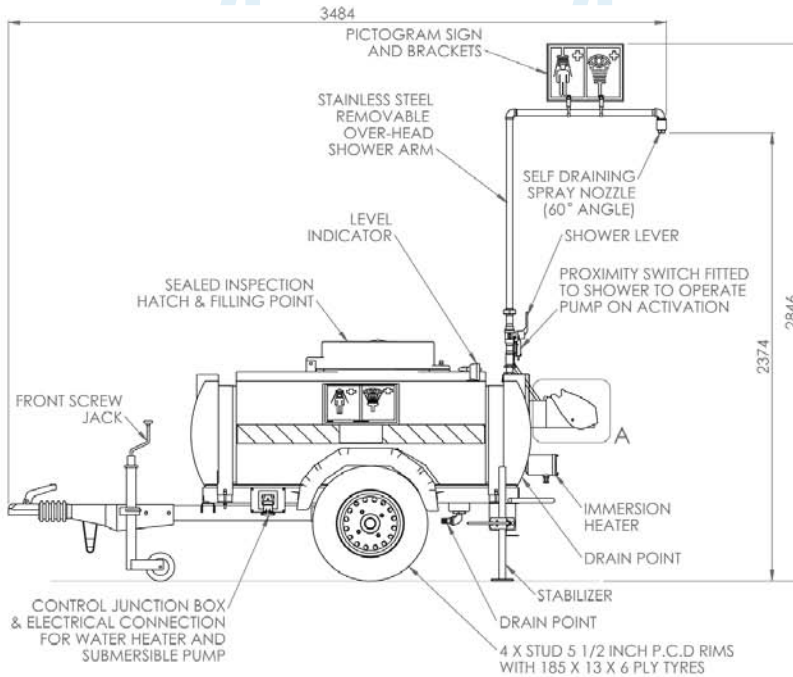


HUGHES

SAFETY-SHOWERS

BOWSER

Model No: STD-MH-P-1200L



Doc. Control:	Rev.:	Date:
	3.2	April 11, 2016

This Article Data Sheet (ADS) is designed and produced by FLOWTRONIX (FT) covered under the intellectual property law. Any reproduction in whole or in part is strictly prohibited without written approval. FT FR 6050-3

