

HUGHES


SAFETY-SHOWERS

PEDESTAL MOUNTED EMERGENCY EYE/FACE WASH

Article No.: STD-75GP

Pedestal mounted emergency eye/face wash with open ABS bowl featuring twin spray nozzles protected by dust covers. When activated via the push plate, the water jets lift off the dust covers. The eye wash diffusers are fitted with fine mesh strainers and individual flow controllers designed to give a gentle flow of aerated water. Available with either galvanised or 316L stainless steel pipework.



TECHNICAL SPECIFICATION

Materials of Construction

PIPEWORK AND FITTINGS (G)	Galvanised mild steel with 150lb medium wall tubulars and fittings
EYE/FACE WASH BOWL/LID	ABS Plastic
EYE/FACE WASH DIFFUSERS	Chrome plated brass with stainless steel mesh
STANDARD FINISH	Green powder coated (other colors available)

Services

Water Inlet	1/4" Female BSP
Design Operating Pressure	2.0 to 6 BAR G (29 to 87psi) (Higher supply pressures accommodated with the incorporation of the optional Pressure Reducing Valve)
Test Pressure	10.3 BAR G (149 PSI)
Minimum Flow Rates	12 litres/min. min. (3 US Gallons)

Environmental Operating Temperature

Min. Ambient Operating Temp	5° C (41° F)
Max. Ambient Operating Temp	35° C (95° F)

Activation/Operation

Eye/facewash	Push plate operated (optional foot treadle control for hands free operation)
--------------	---

Weights and Dimensions

Dimensions (WxDxH)	314mm x 535mm x 1154mm
Weight	10kg (22lb)

Doc. Control:	Rev.:	Date:
	3.2	April 12, 2016

This Article Data Sheet (ADS) is designed and produced by FLOWTRONIX (FT) covered under the intellectual property law. Any reproduction in whole or in part is strictly prohibited without written approval. FT ES 1543-3.2

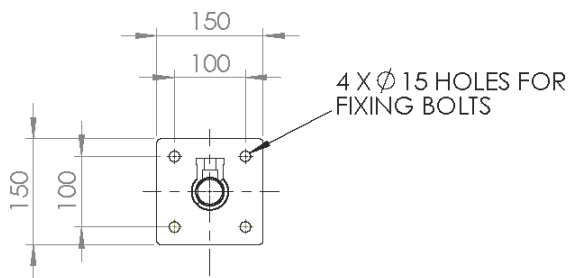
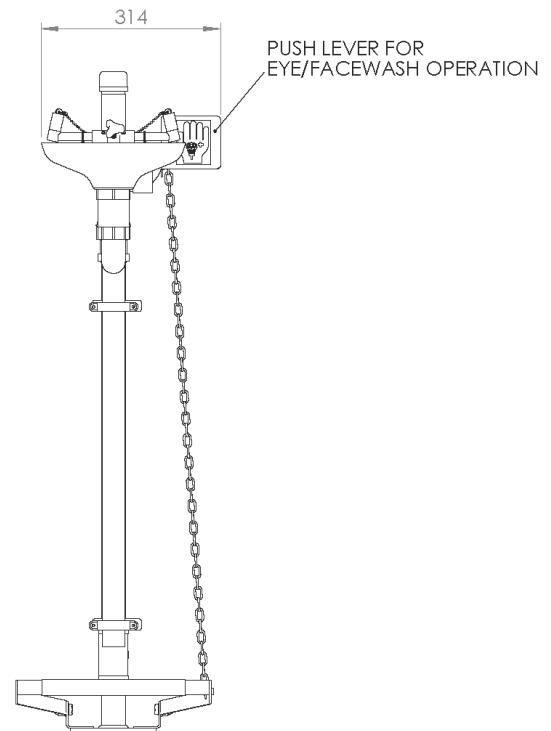
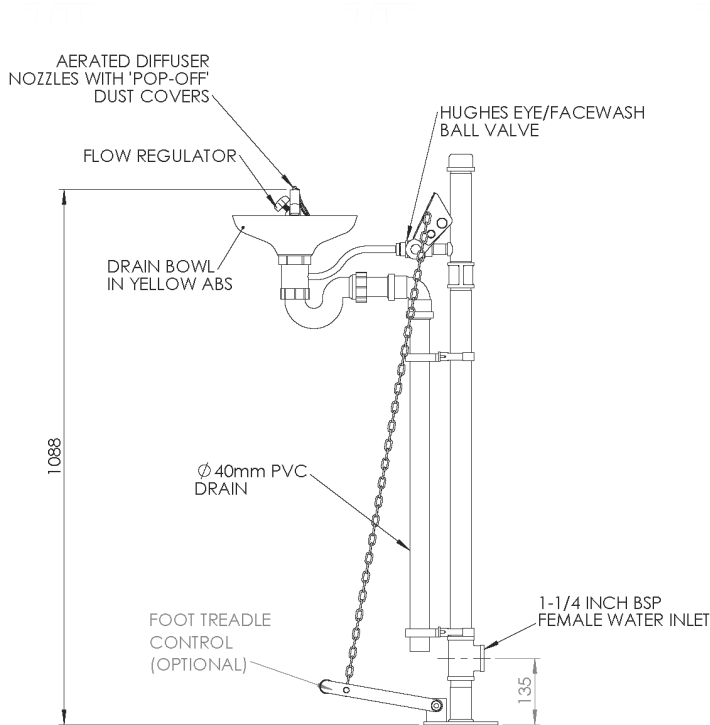


HUGHES

SAFETY-SHOWERS

PEDESTAL MOUNTED EMERGENCY EYE/FACE WASH

Article No.: STD-75GP



FIXING DETAILS

STANDARDS

- Allocate a location reference for ease of identification
- All units to be activated weekly - **ANSI Z358.1 2014**
- Safety shower/eye wash must be located within 10 seconds or 15 metres of a potential hazard - **ANSI Z358.1 2014**
- The unit must be located on the same level as the hazard and the path of travel & local area should be free from obstructions - **ANSI Z358.1 2014**
- The unit should be well lit and identified with highly visible signage to **BS EN ISO 7010 - ANSI Z358.1 2014**
- Flush for sufficient duration to purge the supply pipe with fresh water
- Replace worn or illegible safety signs and stickers
- Sign & date service tag when service completed

Doc. Control:	Rev.:	Date:
	3.2	April 12, 2016

This Article Data Sheet (ADS) is designed and produced by FLOWTRONIX (FT) covered under the intellectual property law. Any reproduction in whole or in part is strictly prohibited without written approval. FT ES 1543-3.2

